

**PENTHOUSE - 3<sup>e</sup> ÉTAGE**  
**PENTHOUSE - 3<sup>rd</sup> FLOOR**



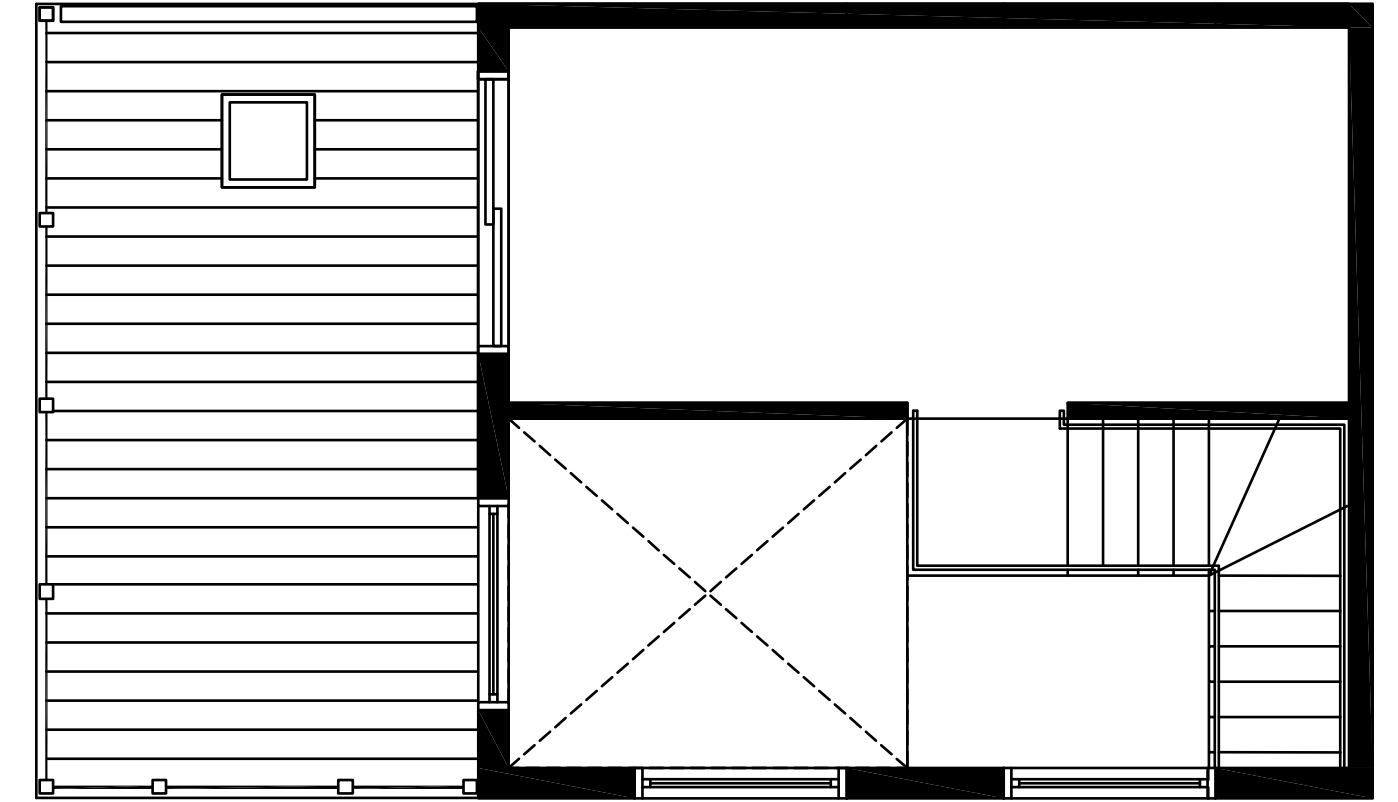
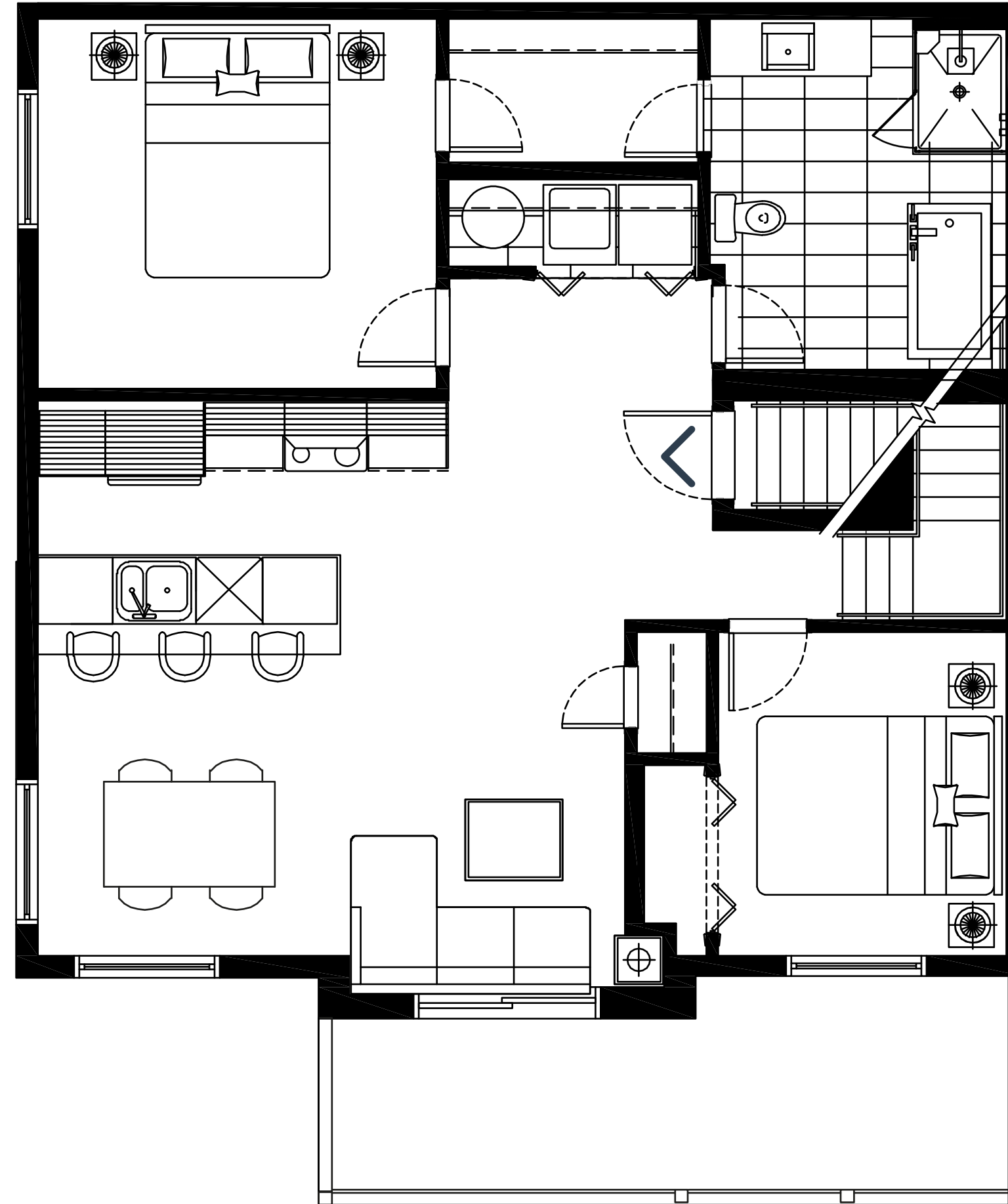
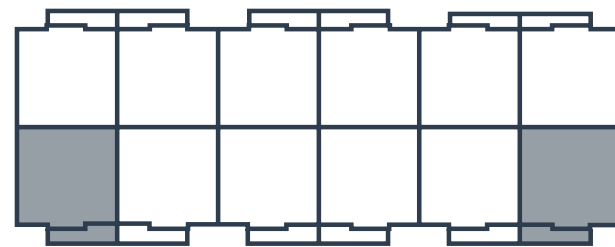
**2 Chambres + loft**  
2 Bedrooms + loft



**1 Salle de bain**  
1 Bathroom

**UNITÉS | UNITS**

04 & 17



**Les mesures sont approximatives. Measurements are approximate.**  
Ces illustrations sont des dessins d'artiste. Les spécifications et les plans de plancher peuvent changer sans préavis. | These renderings are artist's concepts only. Specifications and floorplans subject to change without notice.

**Superficie | Area** 1 188 pi<sup>2</sup> / sq. ft. • **Balcons | Balconies** 298 pi<sup>2</sup> / sq. ft. • **Total** 1 486 pi<sup>2</sup> / sq. ft.

**PENTHOUSE - 3<sup>e</sup> ÉTAGE**  
**PENTHOUSE - 3<sup>rd</sup> FLOOR**



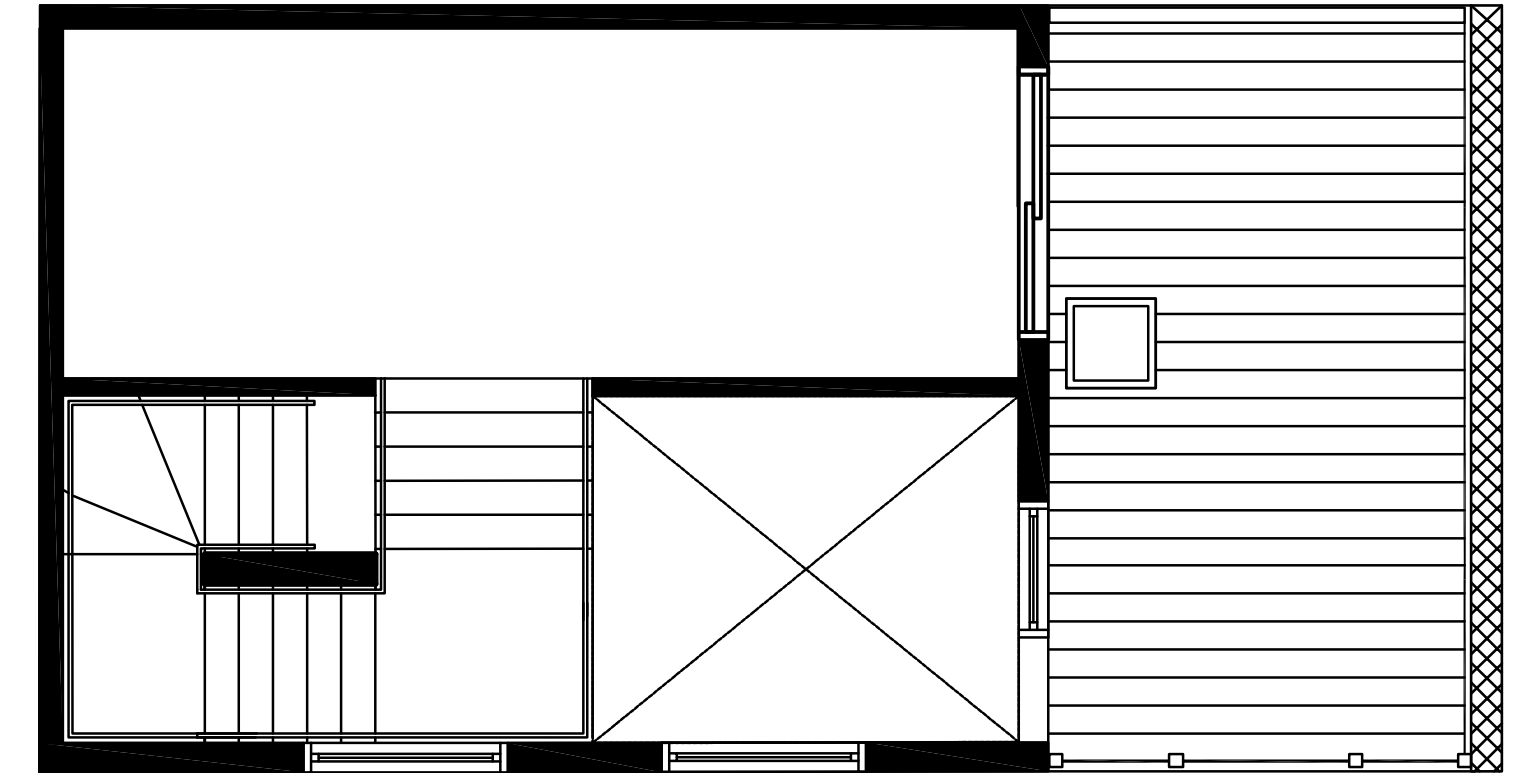
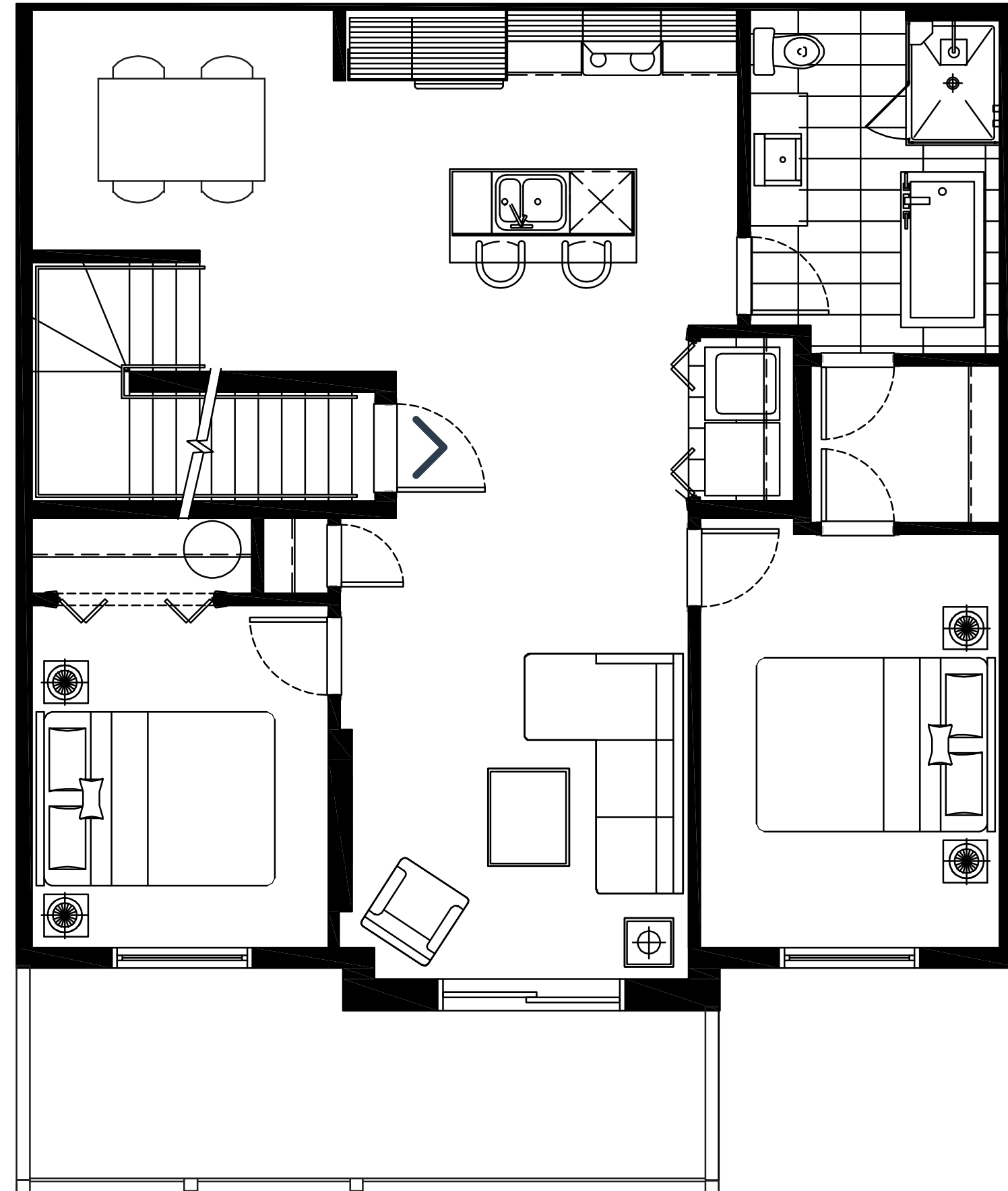
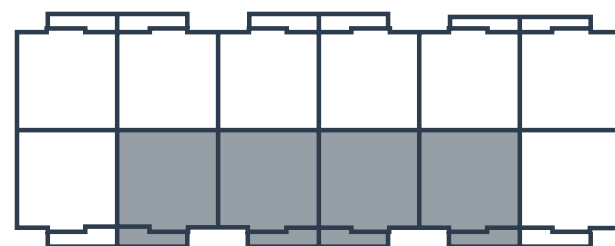
**2 Chambres + loft**  
2 Bedrooms + loft



**1 Salle de bain**  
1 Bathroom

**UNITÉS | UNITS**

05, 10, 11, 16



**Les mesures sont approximatives. Measurements are approximate.**  
Ces illustrations sont des dessins d'artiste. Les spécifications et les plans de plancher peuvent changer sans préavis. | These renderings are artist's concepts only. Specifications and floorplans subject to change without notice.

**Superficie | Area** 1 218 pi<sup>2</sup> / sq. ft. • **Balcons | Balconies** 287 pi<sup>2</sup> / sq. ft. • **Total** 1 505 pi<sup>2</sup> / sq. ft.

**PENTHOUSE - 3<sup>e</sup> ÉTAGE**  
PENTHOUSE - 3<sup>rd</sup> FLOOR



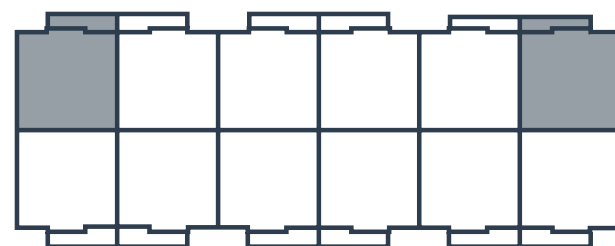
**2 Chambres + loft**  
2 Bedrooms + loft



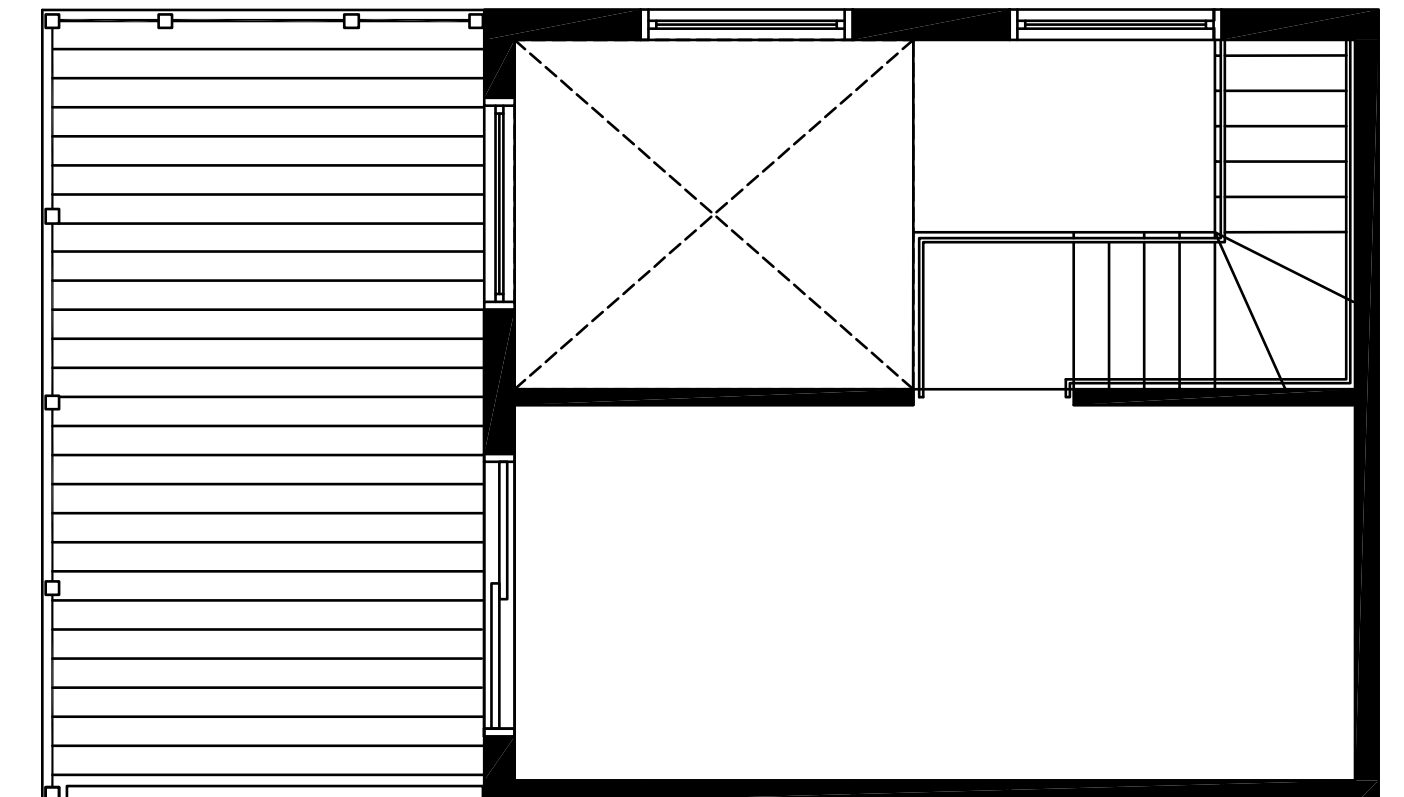
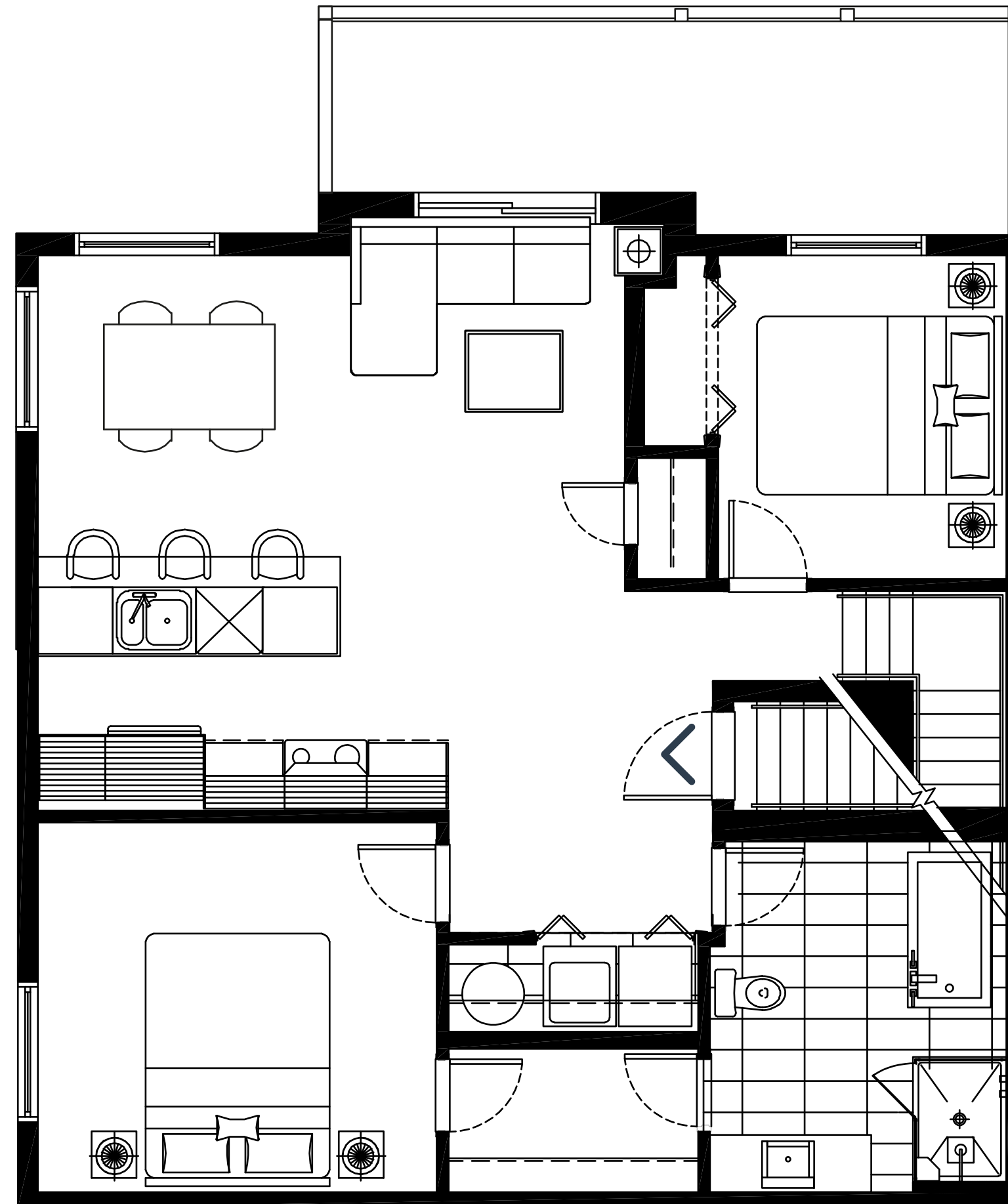
**1 Salle de bain**  
1 Bathroom

**UNITÉS | UNITS**

22 & 35



**Les mesures sont approximatives. Measurements are approximate.**  
Ces illustrations sont des dessins d'artiste. Les spécifications et les plans de plancher peuvent changer sans préavis. | These renderings are artist's concepts only. Specifications and floorplans subject to change without notice.



**Superficie | Area** 1 188 pi<sup>2</sup> / sq. ft. • **Balcons | Balconies** 298 pi<sup>2</sup> / sq. ft. • **Total** 1 486 pi<sup>2</sup> / sq. ft.

**PENTHOUSE - 3<sup>e</sup> ÉTAGE**  
PENTHOUSE - 3<sup>rd</sup> FLOOR



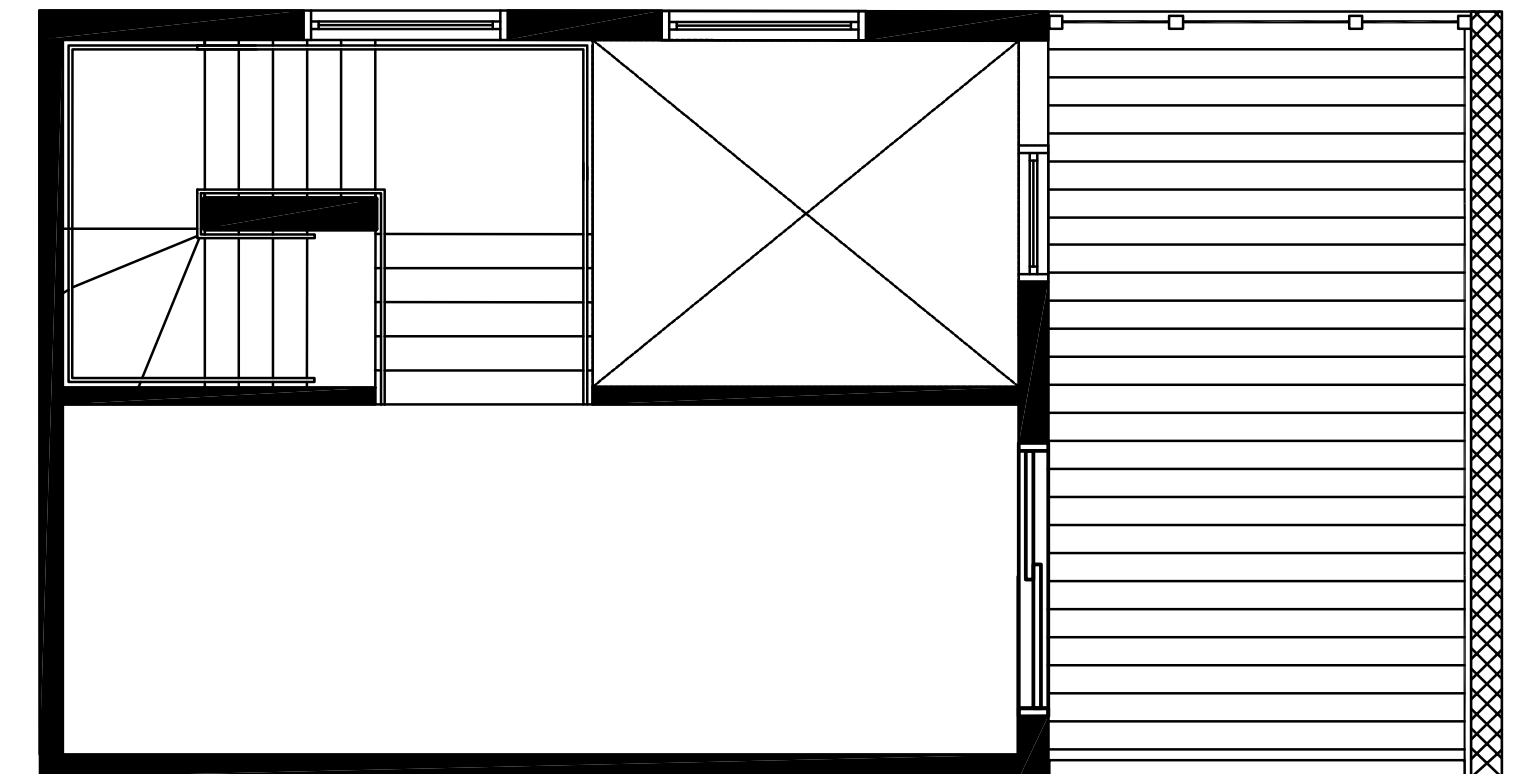
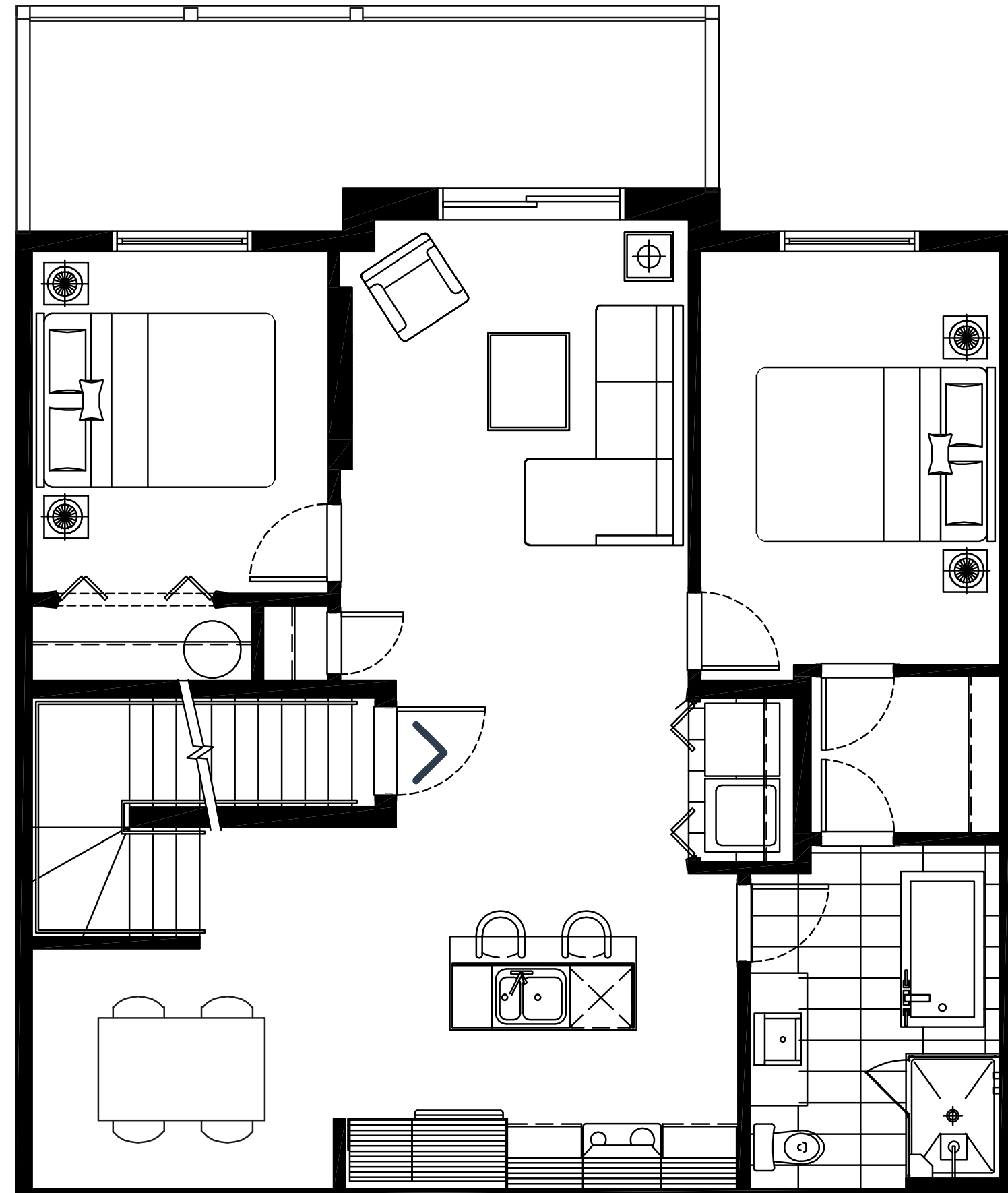
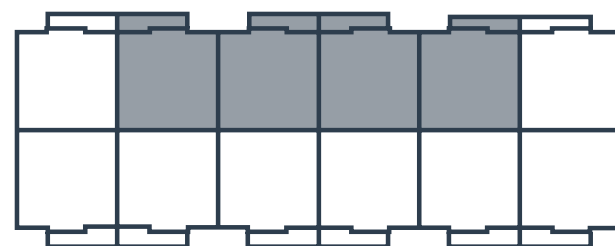
**2 Chambres + loft**  
2 Bedrooms + loft



**1 Salle de bain**  
1 Bathroom

**UNITÉS | UNITS**

23, 28, 29, 34



**Les mesures sont approximatives. Measurements are approximate.**  
Ces illustrations sont des dessins d'artiste. Les spécifications et les plans de plancher peuvent changer sans préavis. | These renderings are artist's concepts only. Specifications and floorplans subject to change without notice.

**Superficie | Area** 1 218 pi<sup>2</sup> / sq. ft. • **Balcons | Balconies** 287 pi<sup>2</sup> / sq. ft. • **Total** 1 505 pi<sup>2</sup> / sq. ft.