

REZ-DE-CHAUSSÉE GROUND FLOOR



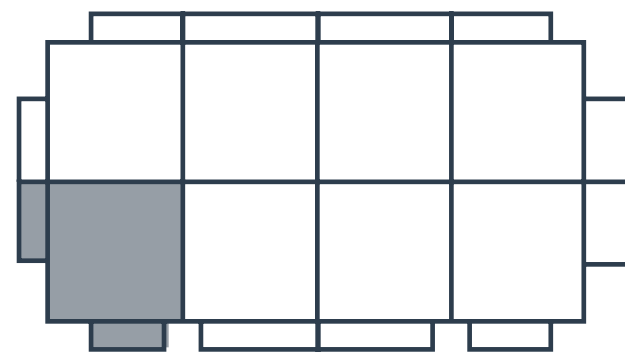
2 Chambres
2 Bedrooms



1 Salle de bain
1 Bathroom

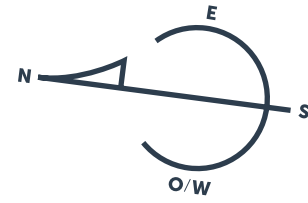
UNITÉ | UNIT

01



CH. MORLEY-WALTERS

Les mesures sont approximatives. Measurements are approximate.
Ces illustrations sont des dessins d'artiste. Les spécifications et les plans de plancher peuvent changer sans préavis. | These renderings are artist's concepts only. Specifications and floorplans subject to change without notice.



Superficie | Area 1 026 pi² / sq. ft. • **Balcons | Balconies** 225 pi² / sq. ft. • **Total** 1 251 pi² / sq. ft.

REZ-DE-CHAUSSÉE
GROUND FLOOR



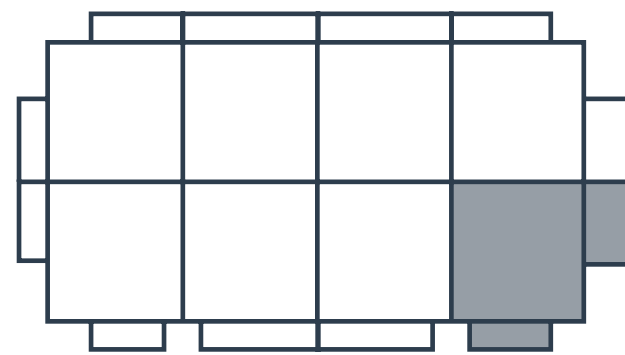
2 Chambres
2 Bedrooms



1 Salle de bain
1 Bathroom

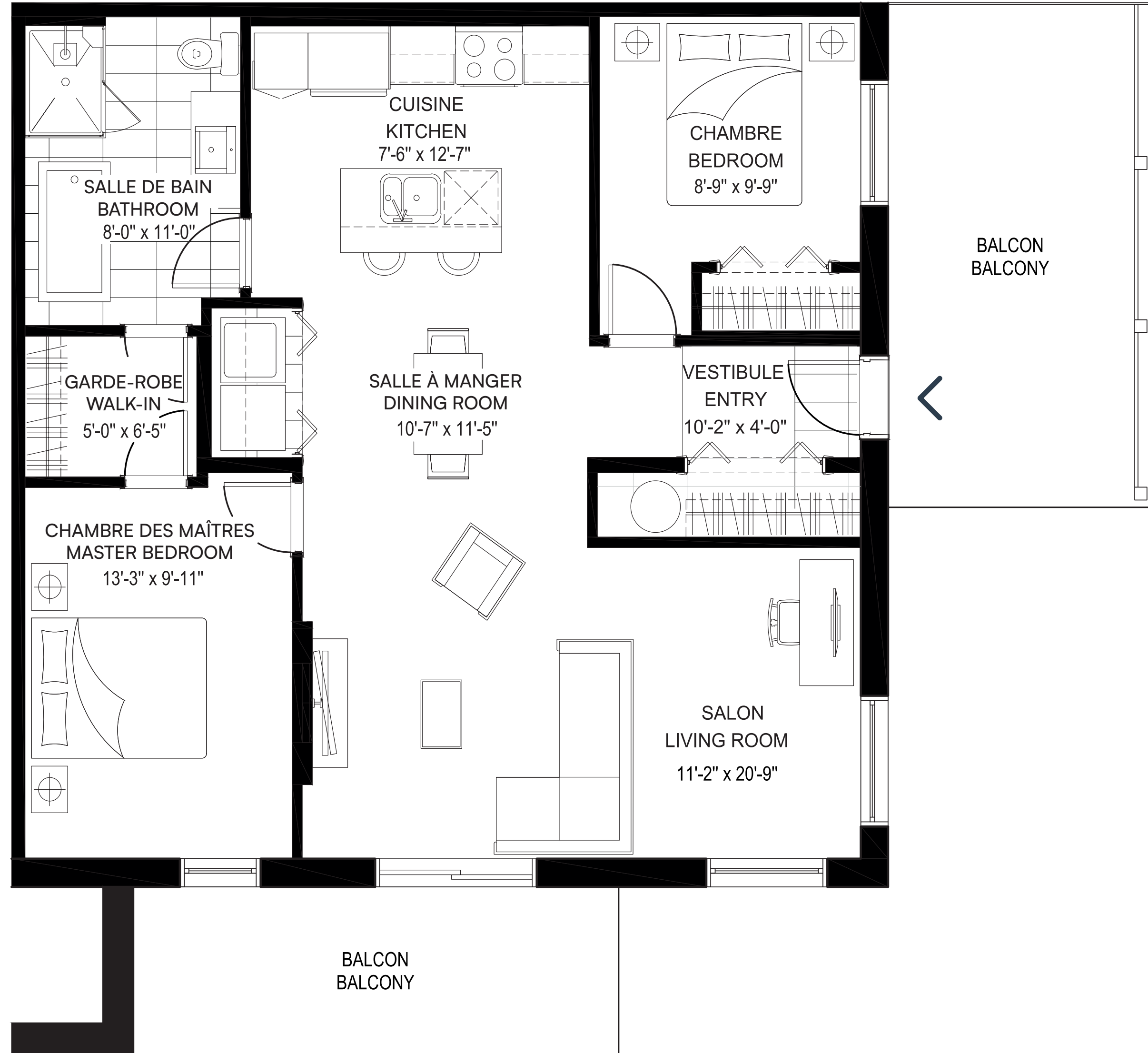
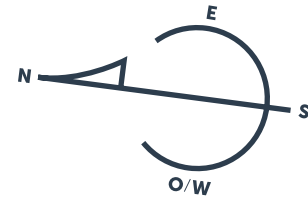
UNITÉ | UNIT

08



CH. MORLEY-WALTERS

Les mesures sont approximatives. Measurements are approximate.
Ces illustrations sont des dessins d'artiste. Les spécifications et les plans de plancher peuvent changer sans préavis. | These renderings are artist's concepts only. Specifications and floorplans subject to change without notice.



Superficie | Area 1 026 pi² / sq. ft. • Balcons | Balconies 285 pi² / sq. ft. • Total 1 311 pi² / sq. ft.

REZ-DE-CHAUSSÉE
GROUND FLOOR



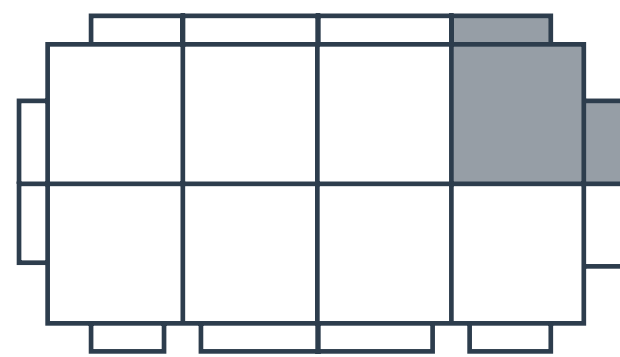
2 Chambres
2 Bedrooms



1 Salle de bain
1 Bathroom

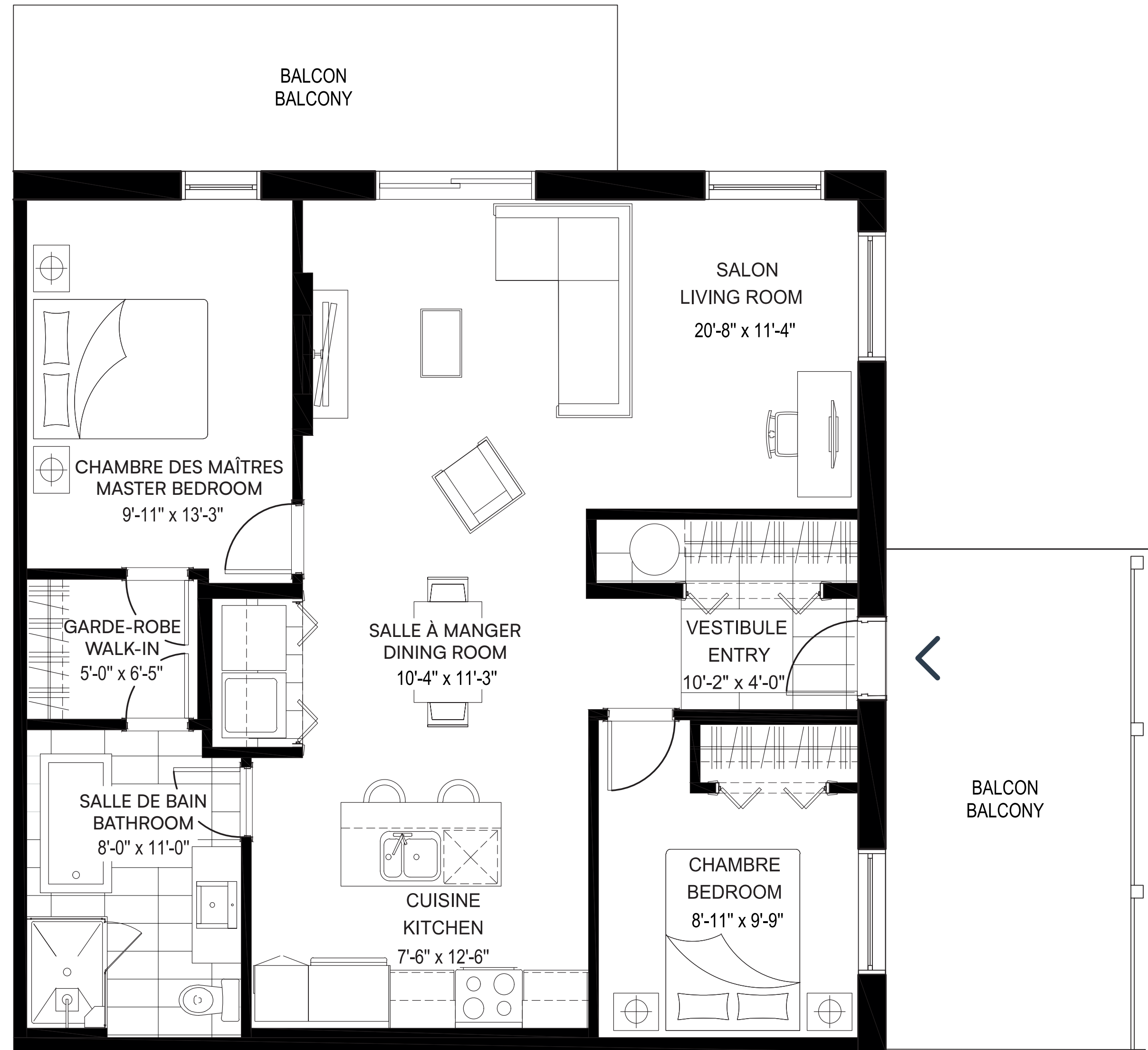
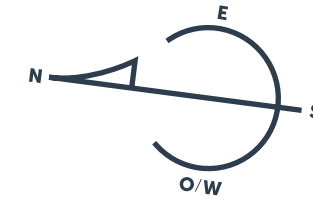
UNITÉ | UNIT

13



CH. MORLEY-WALTERS

Les mesures sont approximatives. Measurements are approximate.
Ces illustrations sont des dessins d'artiste. Les spécifications et les plans de plancher peuvent changer sans préavis. | These renderings are artist's concepts only. Specifications and floorplans subject to change without notice.



Superficie | Area 1 026 pi² / sq. ft. • **Balcons | Balconies** 312 pi² / sq. ft. • **Total** 1 338 pi² / sq. ft.

REZ-DE-CHAUSSÉE
GROUND FLOOR



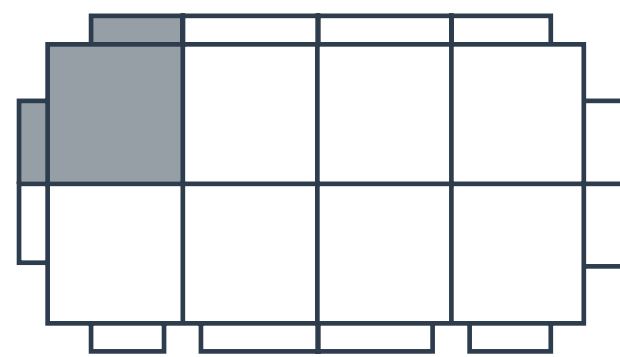
2 Chambres
2 Bedrooms



1 Salle de bain
1 Bathroom

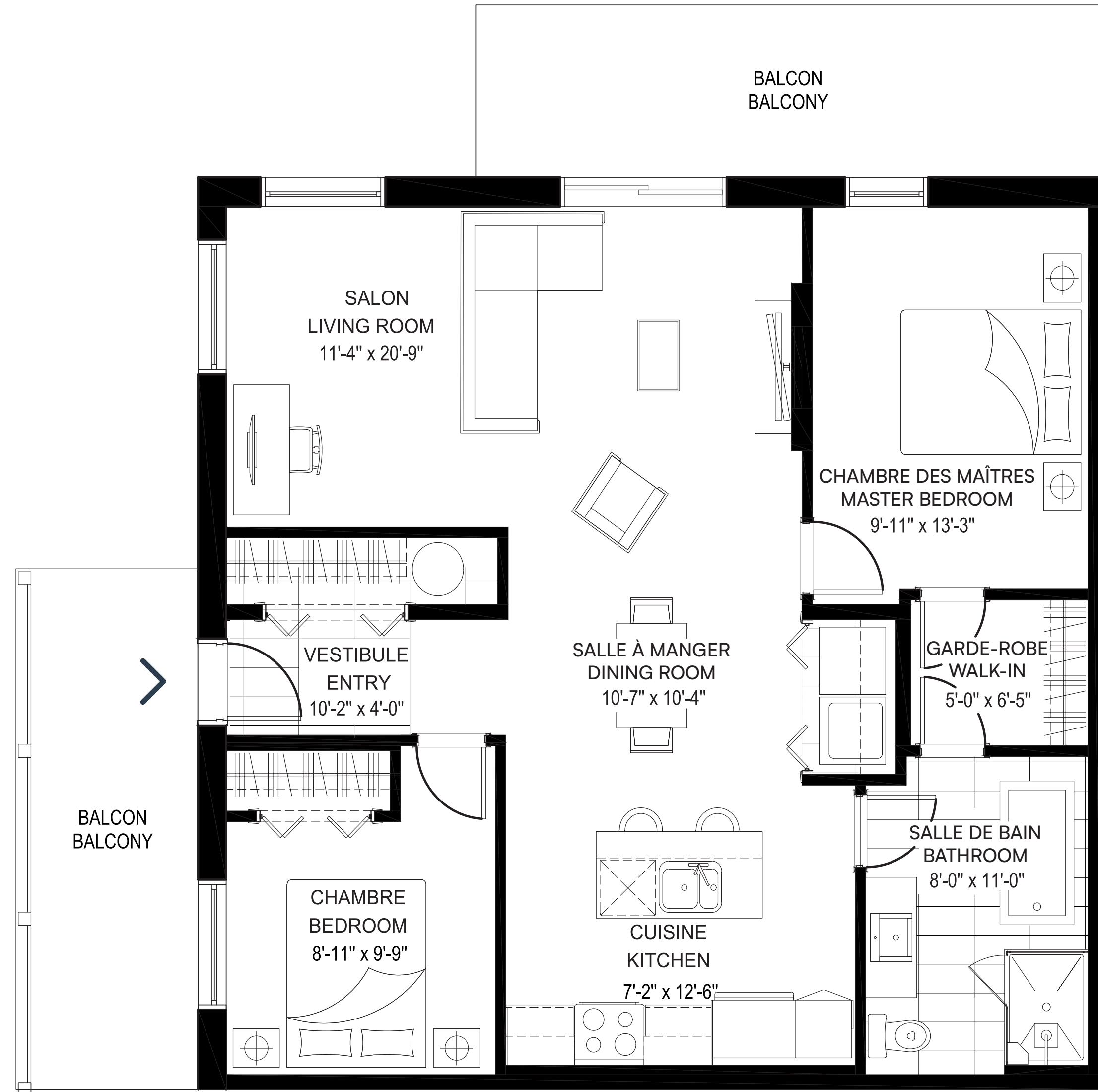
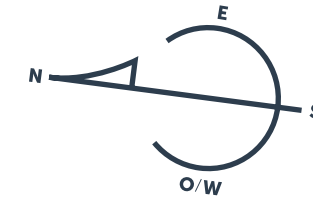
UNITÉ | UNIT

20



CH. MORLEY-WALTERS

Les mesures sont approximatives. Measurements are approximate.
Ces illustrations sont des dessins d'artiste. Les spécifications et les plans de plancher peuvent changer sans préavis. | These renderings are artist's concepts only. Specifications and floorplans subject to change without notice.



Superficie | Area 1 026 pi² / sq. ft. • **Balcons | Balconies** 252 pi² / sq. ft. • **Total** 1 278 pi² / sq. ft.

2^e ÉTAGE
2nd FLOOR



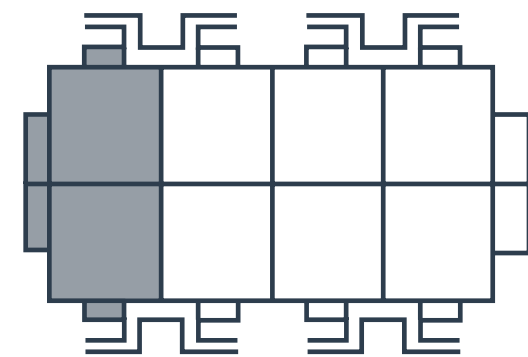
2 Chambres
2 Bedrooms



1 Salle de bain
1 Bathroom

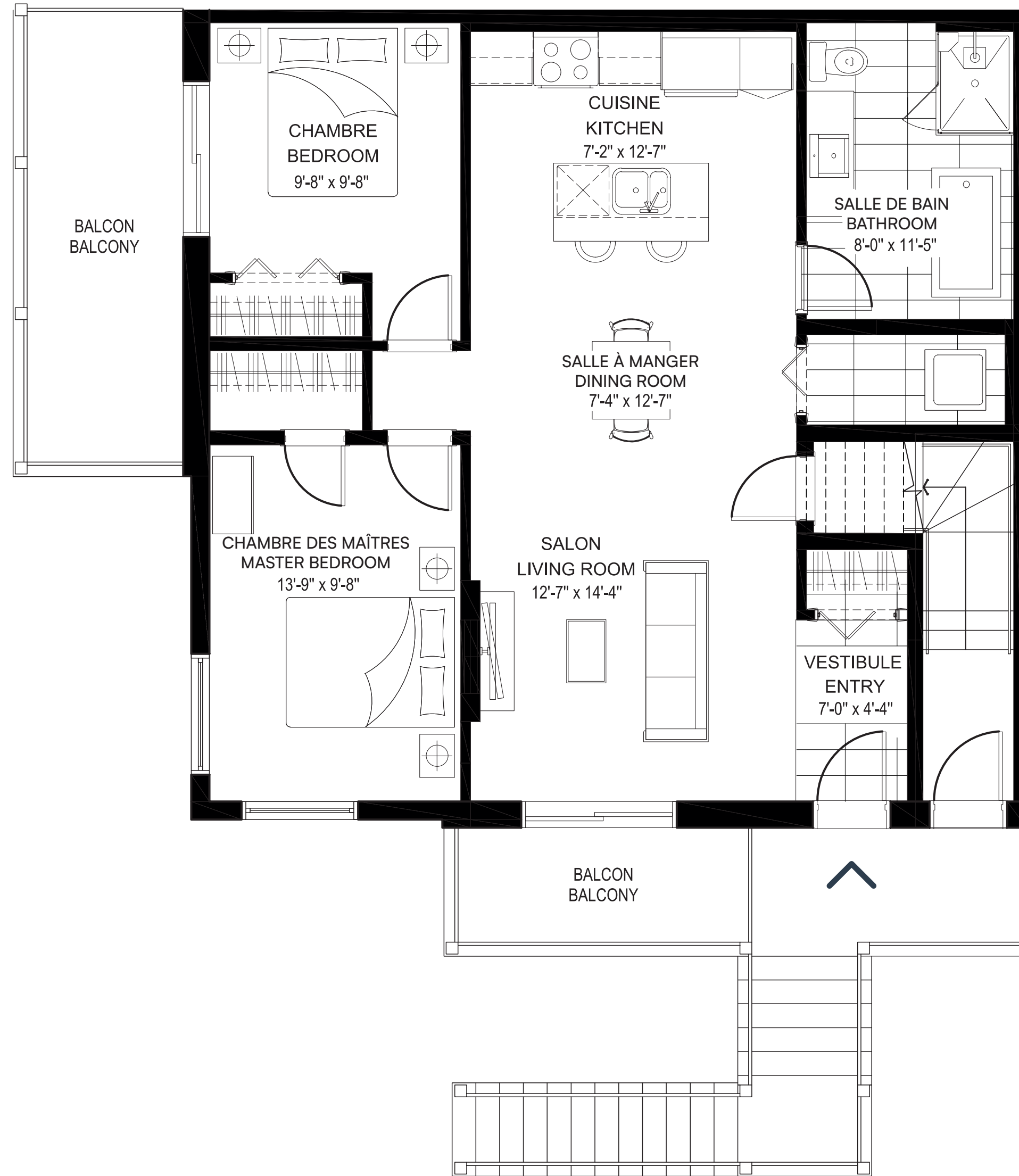
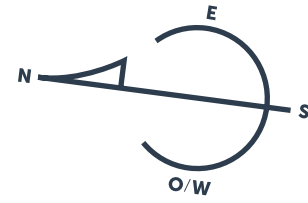
UNITÉS | UNIT

03, 24



CH. MORLEY-WALTERS

Les mesures sont approximatives. Measurements are approximate.
Ces illustrations sont des dessins d'artiste. Les spécifications et les plans de plancher peuvent changer sans préavis. | These renderings are artist's concepts only. Specifications and floorplans subject to change without notice.



Superficie | Area 954 pi² / sq. ft. • **Balcons | Balconies** 176 pi² / sq. ft. • **Total** 1 130 pi² / sq. ft.

2^e ÉTAGE
2nd FLOOR



2 Chambres*
2 Bedrooms*

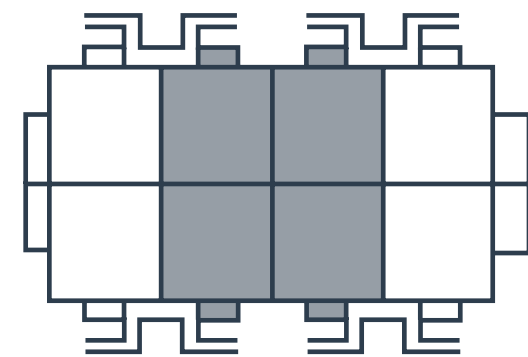
*La 2^e chambre est une chambre intérieure. The 2nd bedroom is an interior bedroom.



1 Salle de bain
1 Bathroom

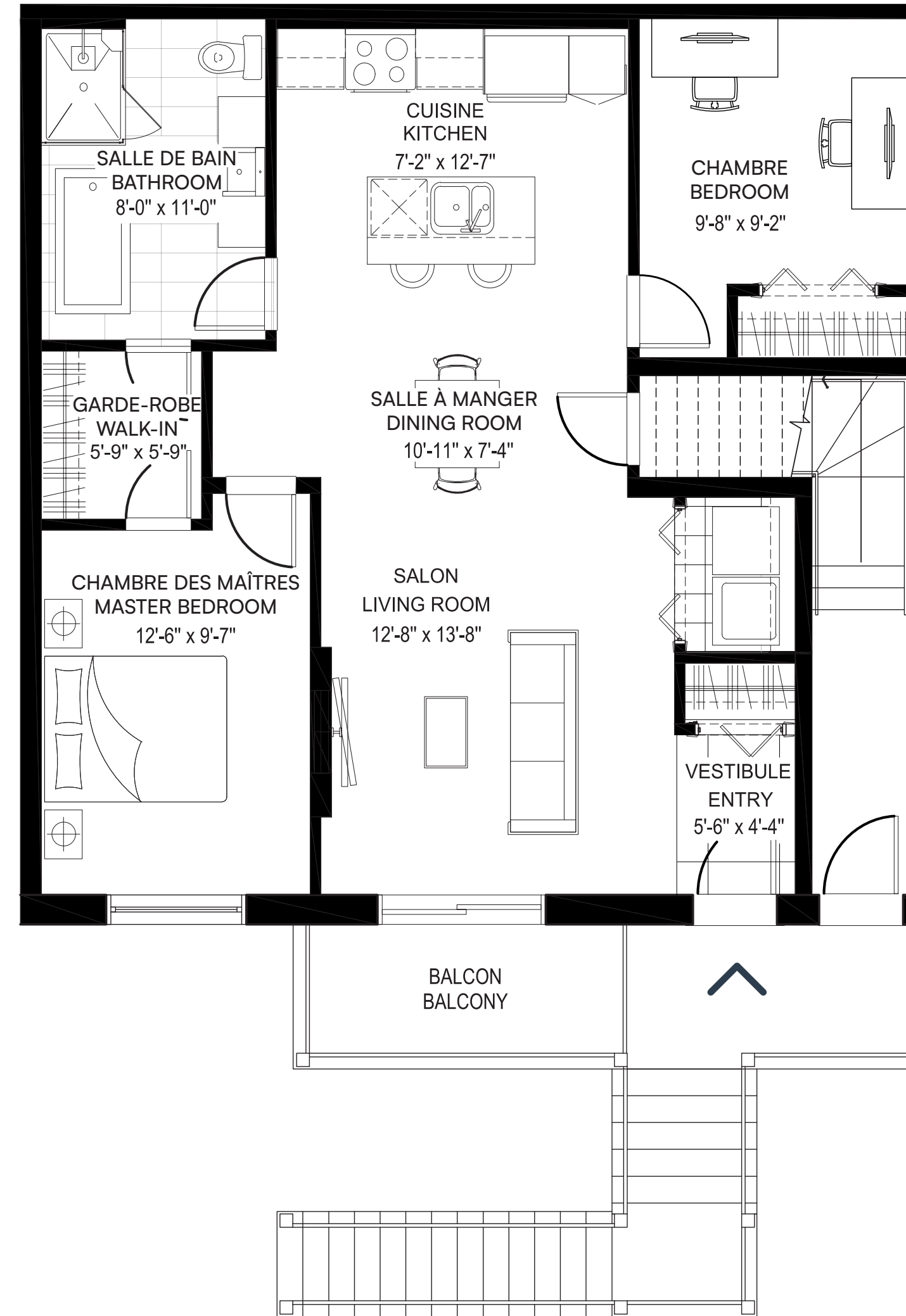
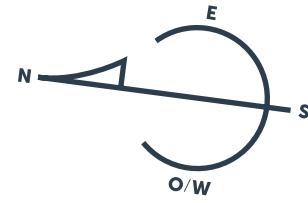
UNITÉS | UNITS

06, 09, 18, 21



CH. MORLEY-WALTERS

Les mesures sont approximatives. Measurements are approximate.
Ces illustrations sont des dessins d'artiste. Les spécifications et les plans de plancher peuvent changer sans préavis. | These renderings are artist's concepts only. Specifications and floorplans subject to change without notice.



Superficie | Area 935 pi² / sq. ft. • **Balcon | Balcony** 59 pi² / sq. ft. • **Total** 994 pi² / sq. ft.

2^e ÉTAGE 2nd FLOOR



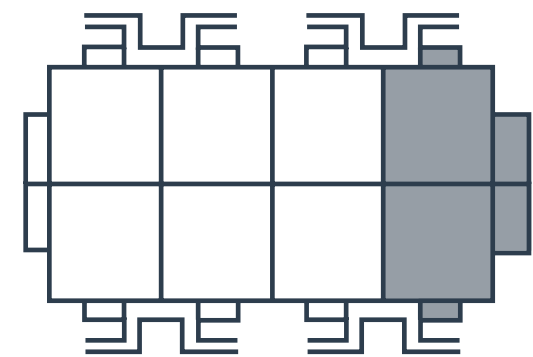
2 Chambres
2 Bedrooms



1 Salle de bain
1 Bathroom

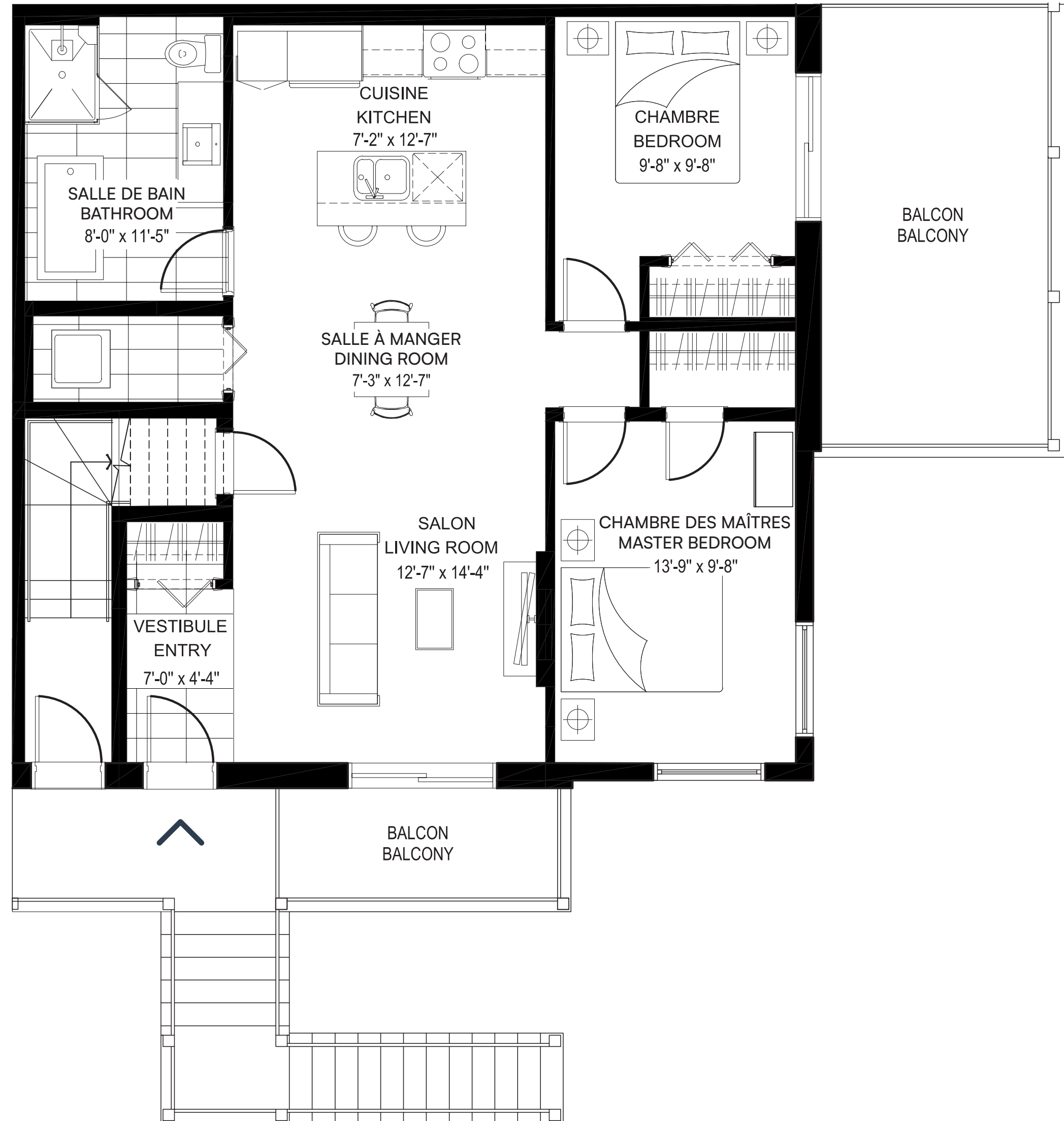
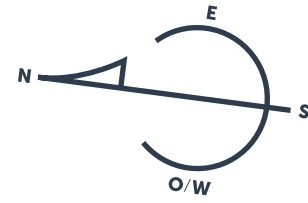
UNITÉS | UNITS

12, 15



CH. MORLEY-WALTERS

Les mesures sont approximatives. Measurements are approximate.
Ces illustrations sont des dessins d'artiste. Les spécifications et les plans de plancher peuvent changer sans préavis. | These renderings are artist's concepts only. Specifications and floorplans subject to change without notice.



Superficie | Area 954 pi² / sq. ft. • **Balcons | Balconies** 237 pi² / sq. ft. • **Total** 1 191 pi² / sq. ft.