

**PENTHOUSES - 16<sup>th</sup> AND 17<sup>th</sup> FLOOR**  
**PENTHOUSES - 16<sup>e</sup> ET 17<sup>e</sup> ÉTAGE**



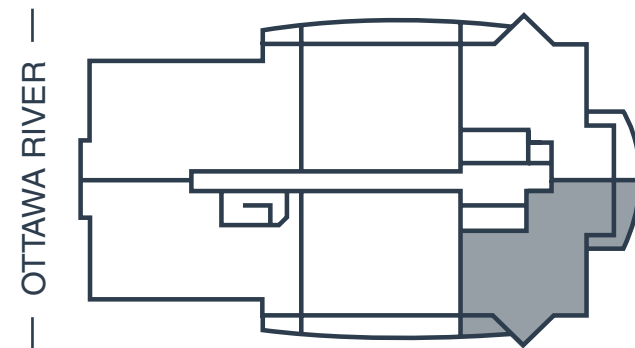
**2 Bedrooms**  
2 Chambres



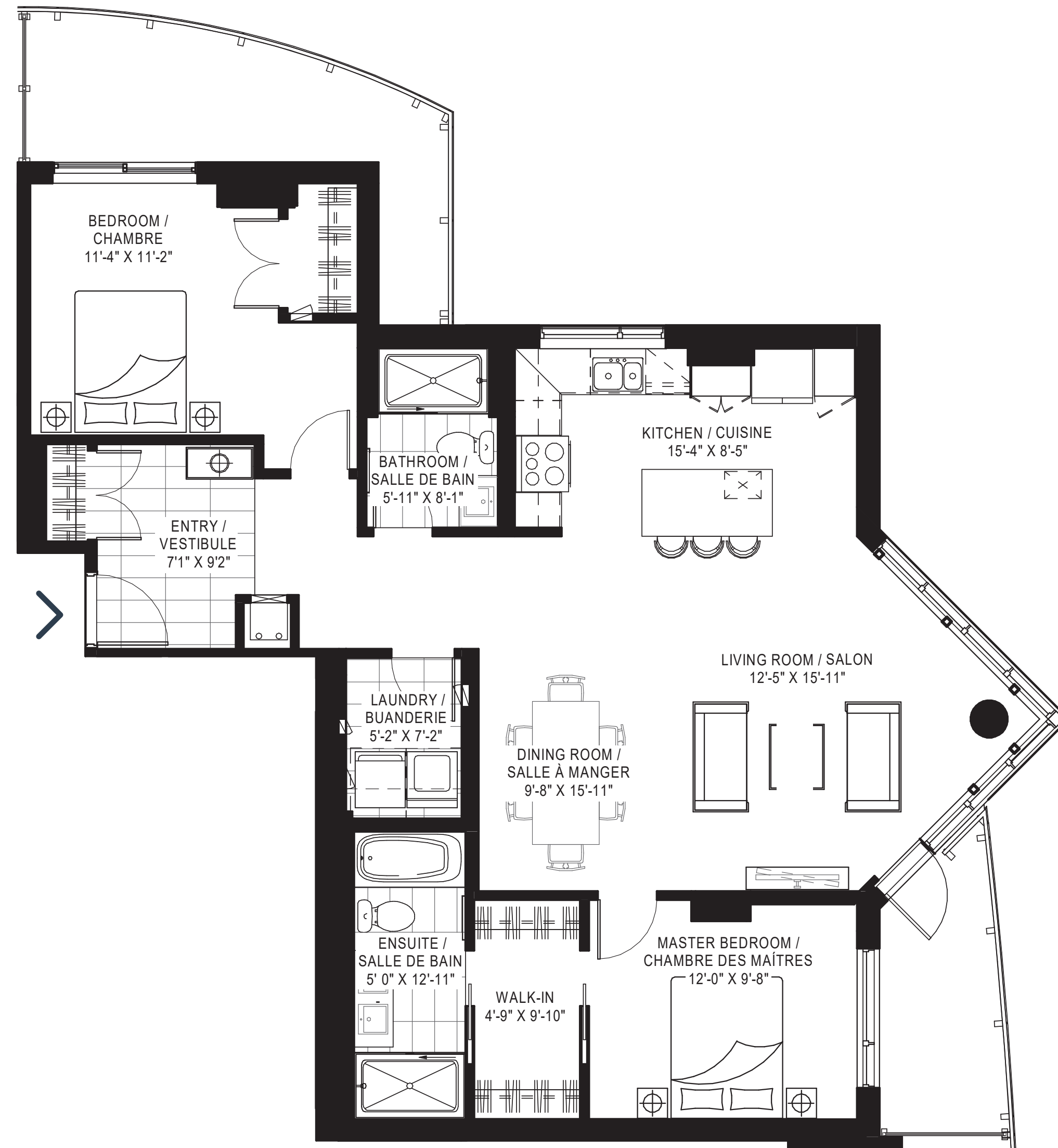
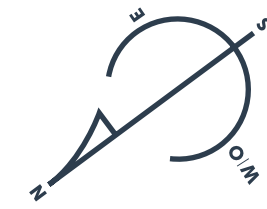
**2 Bathrooms**  
2 Salles de bain

**UNITS | UNITÉS**

PH-1601 & PH-1701



**Measurements are approximate. Les mesures sont approximatives.**  
 These renderings are artist's concepts only. Specifications and floorplans subject to change without notice. | Ces illustrations sont des dessins d'artiste. Les spécifications et les plans de plancher peuvent changer sans préavis.



**Area | Superficie** 1,264 sq. ft. / pi<sup>2</sup> • **Balconies | Balcons** 201 sq. ft. / pi<sup>2</sup> • **Total** 1,437 sq. ft. / pi<sup>2</sup>

**PENTHOUSE - 16<sup>th</sup> FLOOR**  
**PENTHOUSE - 16<sup>e</sup> ÉTAGE**



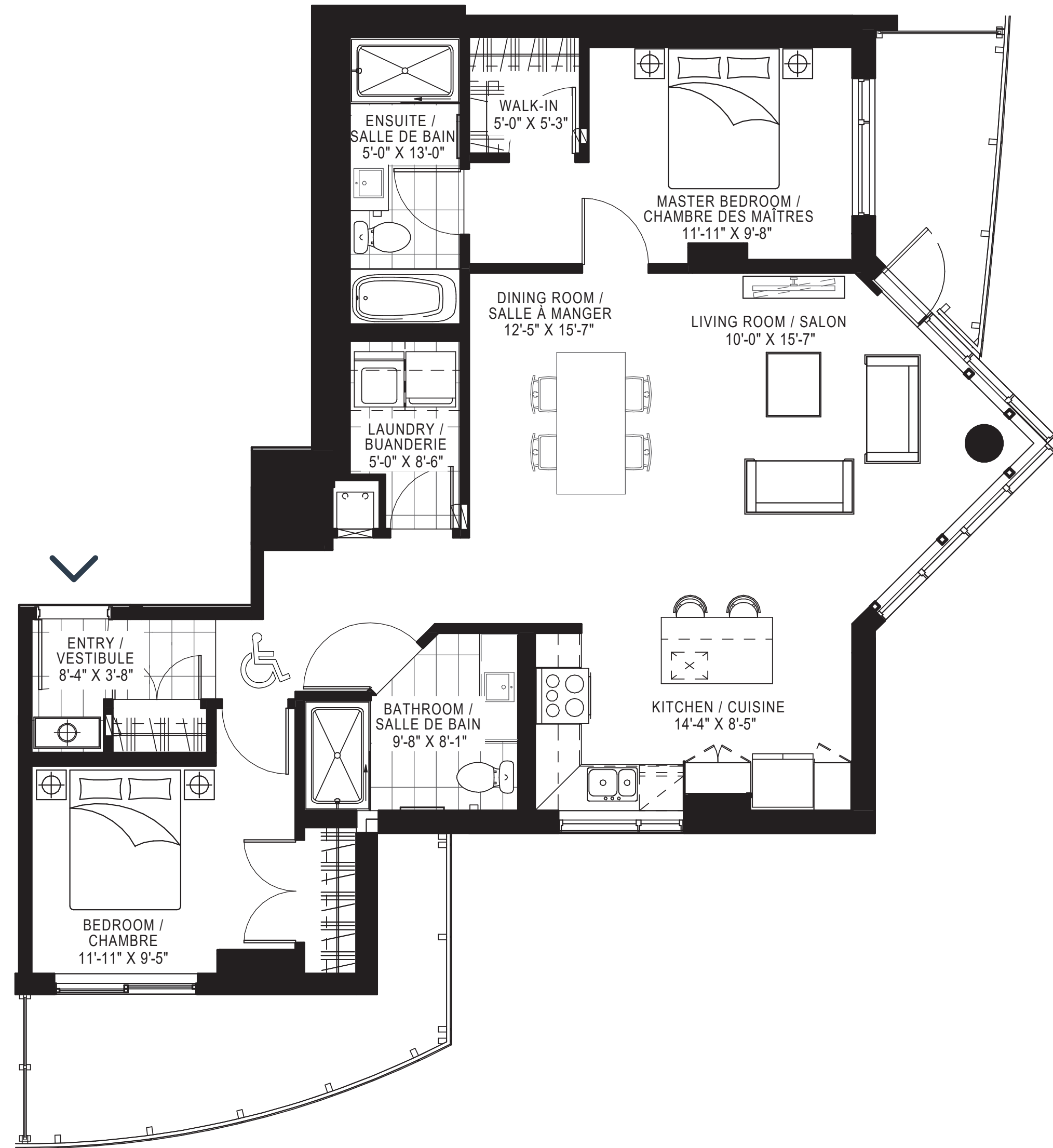
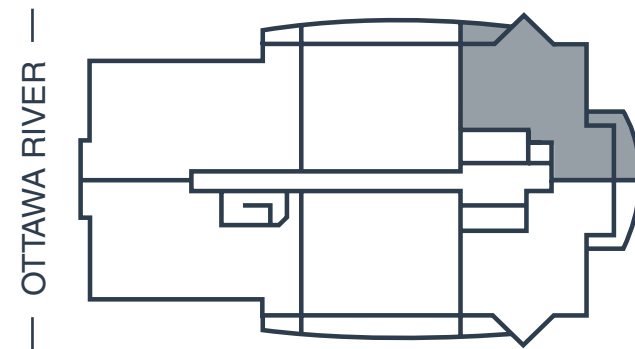
**2 Bedrooms**  
2 Chambres



**2 Bathrooms**  
2 Salles de bain

**UNIT | UNITÉ**

PH-1602



**Measurements are approximate. Les mesures sont approximatives.**  
These renderings are artist's concepts only. Specifications and floorplans subject to change without notice. | Ces illustrations sont des dessins d'artiste. Les spécifications et les plans de plancher peuvent changer sans préavis.

**Area | Superficie** 1,233 sq. ft. / pi<sup>2</sup> • **Balconies | Balcons** 202 sq. ft. / pi<sup>2</sup> • **Total** 1,435 sq. ft. / pi<sup>2</sup>

**PENTHOUSE - 16<sup>th</sup> FLOOR**  
**PENTHOUSE - 16<sup>e</sup> ÉTAGE**



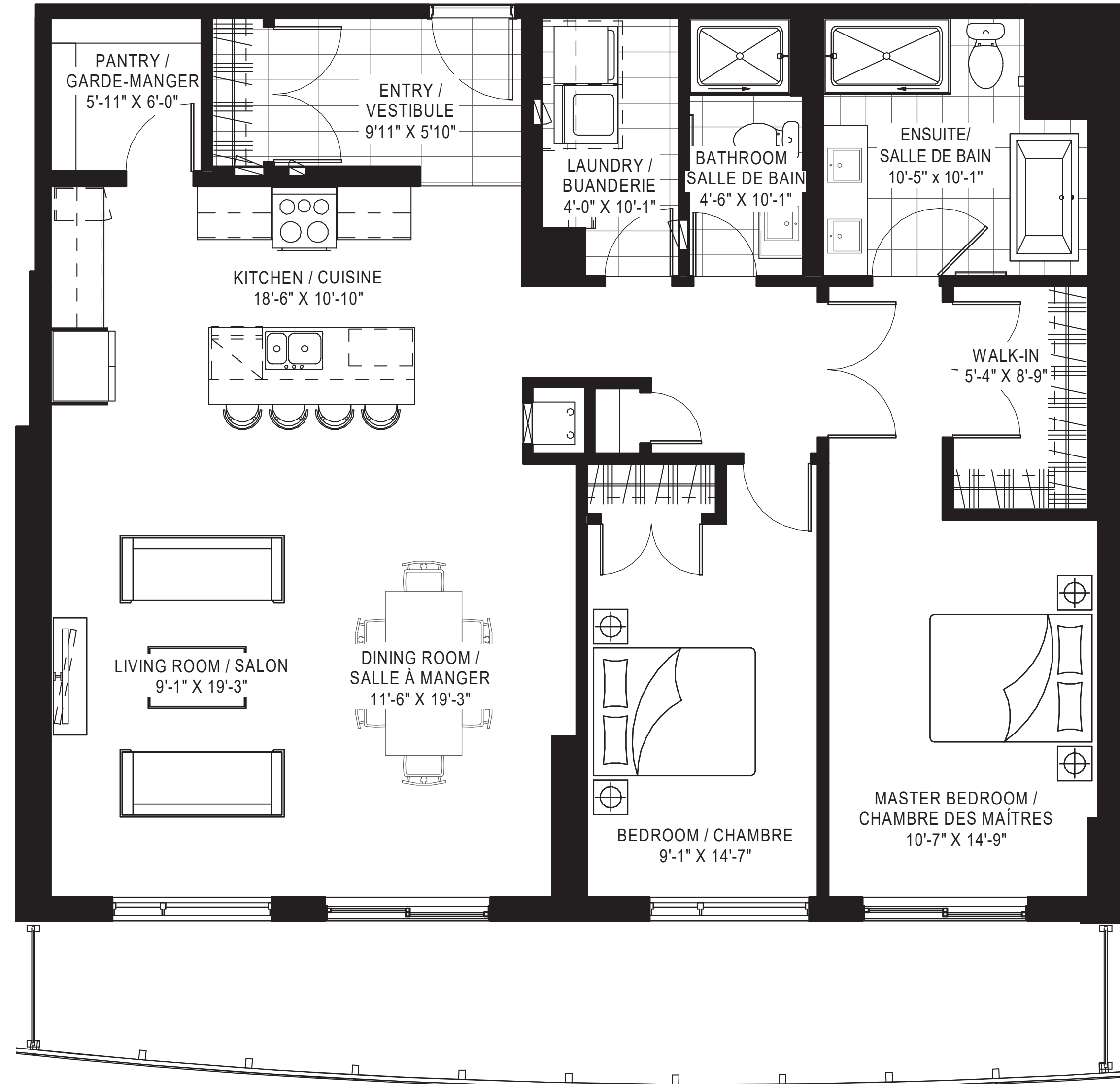
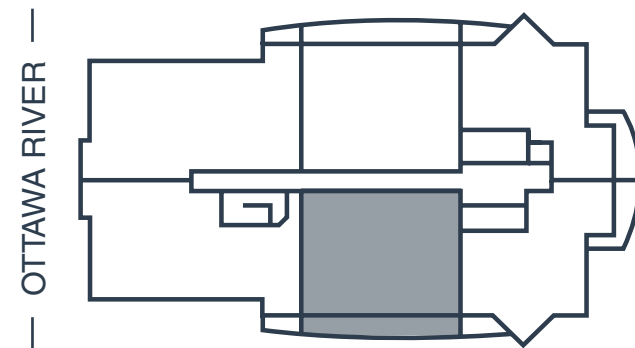
**2 Bedrooms**  
2 Chambres



**2 Bathrooms**  
2 Salles de bain

**UNIT | UNITÉ**

PH-1603



**Measurements are approximate. Les mesures sont approximatives.**  
These renderings are artist's concepts only. Specifications and floorplans subject to change without notice. | Ces illustrations sont des dessins d'artiste. Les spécifications et les plans de plancher peuvent changer sans préavis.

**Area | Superficie** 1,481 sq. ft. / pi<sup>2</sup> • **Balcony | Balcon** 263 sq. ft. / pi<sup>2</sup> • **Total** 1,744 sq. ft. / pi<sup>2</sup>

**PENTHOUSE - 16<sup>th</sup> FLOOR**  
**PENTHOUSE - 16<sup>e</sup> ÉTAGE**



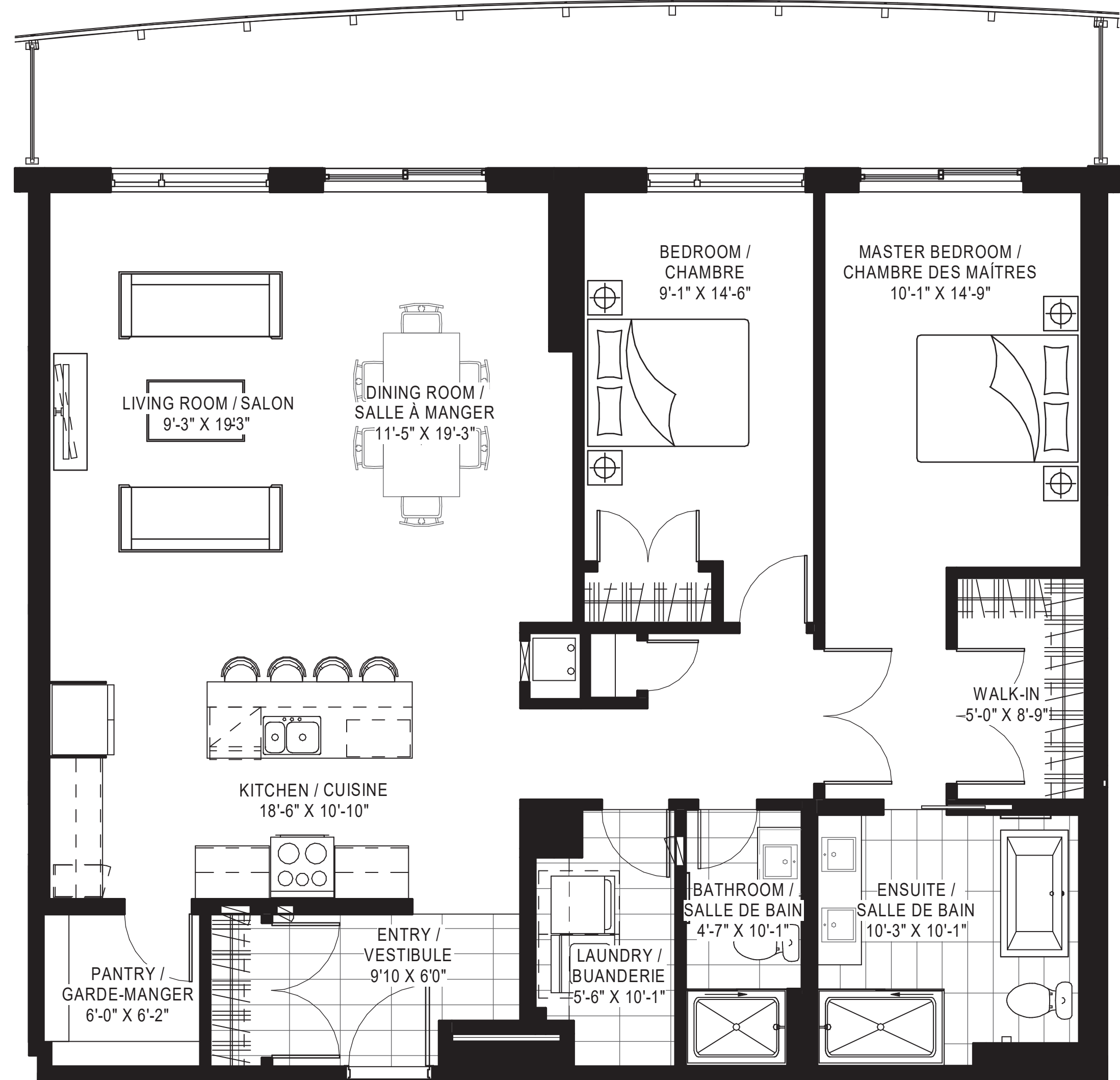
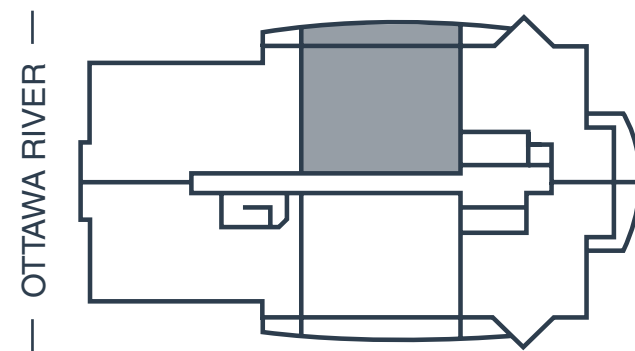
**2 Bedrooms**  
2 Chambres



**2 Bathrooms**  
2 Salles de bain

**UNIT | UNITÉ**

PH-1604



**Measurements are approximate. Les mesures sont approximatives.**  
These renderings are artist's concepts only. Specifications and floorplans subject to change without notice. | Ces illustrations sont des dessins d'artiste. Les spécifications et les plans de plancher peuvent changer sans préavis.

**Area | Superficie** 1,476 sq. ft. / pi<sup>2</sup> • **Balcony | Balcon** 261 sq. ft. / pi<sup>2</sup> • **Total** 1,737 sq. ft. / pi<sup>2</sup>

**PENTHOUSE - 16<sup>th</sup> FLOOR**  
**PENTHOUSE - 16<sup>e</sup> ÉTAGE**



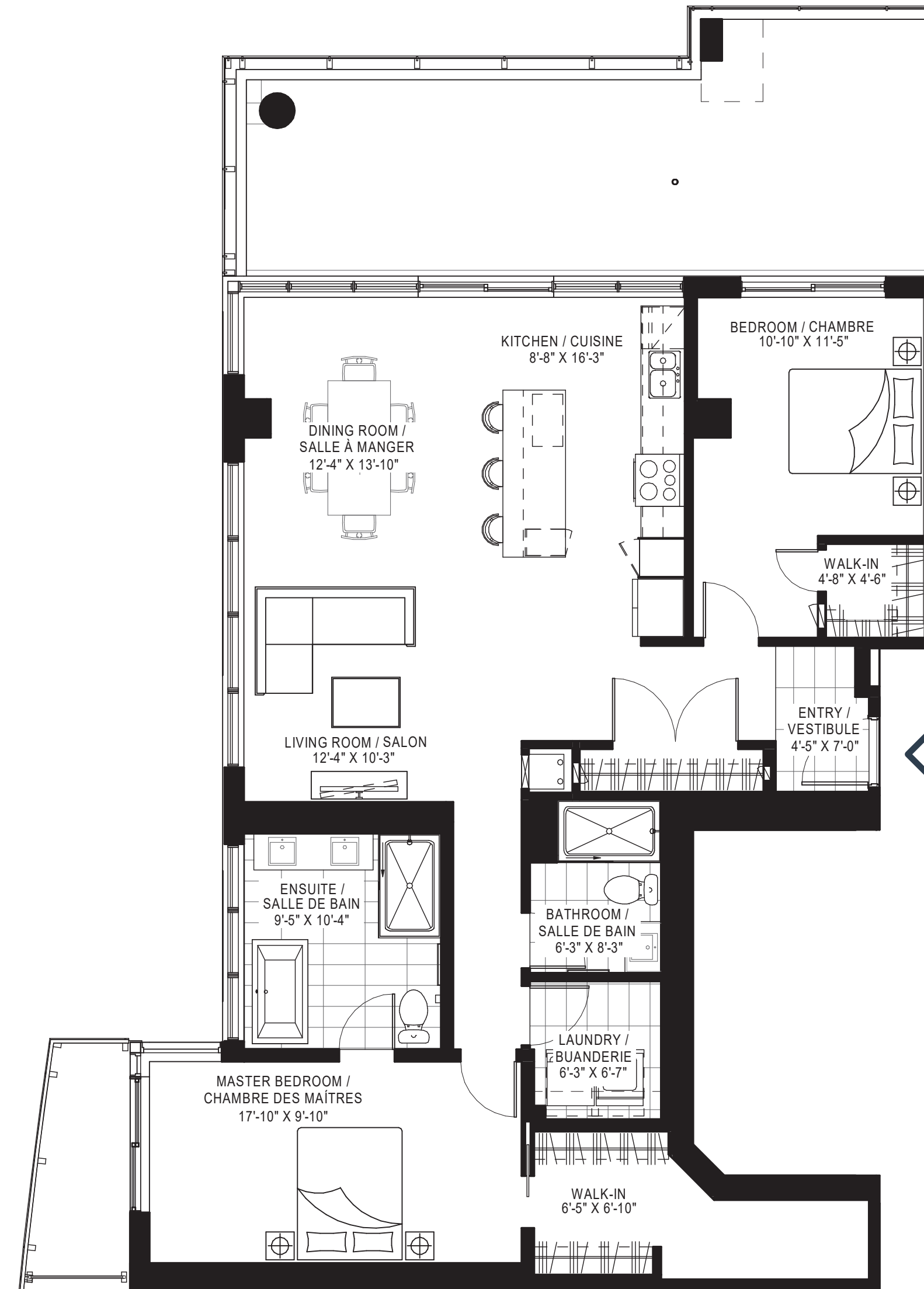
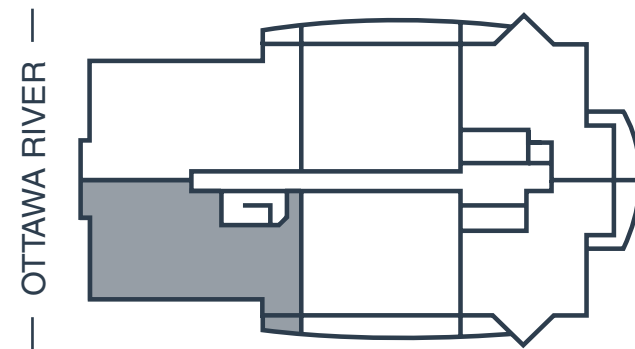
**2 Bedrooms**  
2 Chambres



**2 Bathrooms**  
2 Salles de bain

**UNIT | UNITÉ**

PH-1605



**Measurements are approximate. Les mesures sont approximatives.**  
These renderings are artist's concepts only. Specifications and floorplans subject to change without notice. | Ces illustrations sont des dessins d'artiste. Les spécifications et les plans de plancher peuvent changer sans préavis.

**Area | Superficie** 1,400 sq. ft. / pi<sup>2</sup> • **Balconies | Balcons** 441 sq. ft. / pi<sup>2</sup> • **Total** 1,841 sq. ft. / pi<sup>2</sup>



**PENTHOUSE - 16<sup>th</sup> FLOOR**  
**PENTHOUSE - 16<sup>e</sup> ÉTAGE**



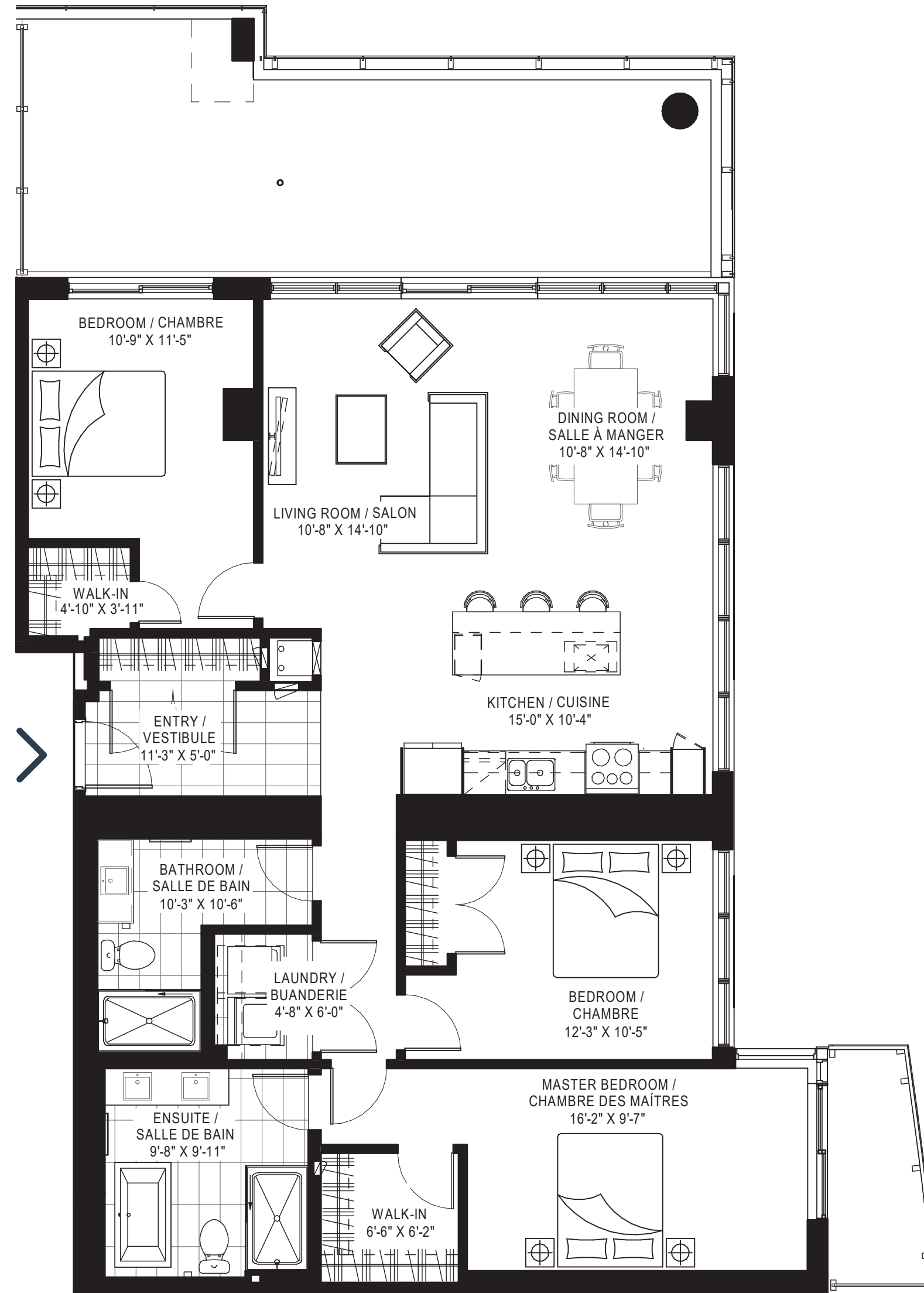
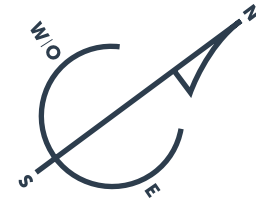
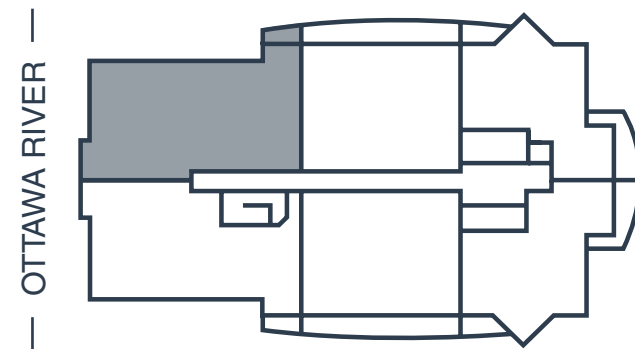
**3 Bedrooms**  
3 Chambres



**2 Bathrooms**  
2 Salles de bain

**UNIT | UNITÉ**

PH-1606



**Measurements are approximate. Les mesures sont approximatives.**  
These renderings are artist's concepts only. Specifications and floorplans subject to change without notice. | Ces illustrations sont des dessins d'artiste. Les spécifications et les plans de plancher peuvent changer sans préavis.

**Area | Superficie** 1,582 sq. ft. / pi<sup>2</sup> • **Balconies | Balcons** 442 sq. ft. / pi<sup>2</sup> • **Total** 2,413 sq. ft. / pi<sup>2</sup>

**PENTHOUSE - 17<sup>th</sup> FLOOR**  
**PENTHOUSE - 17<sup>e</sup> ÉTAGE**



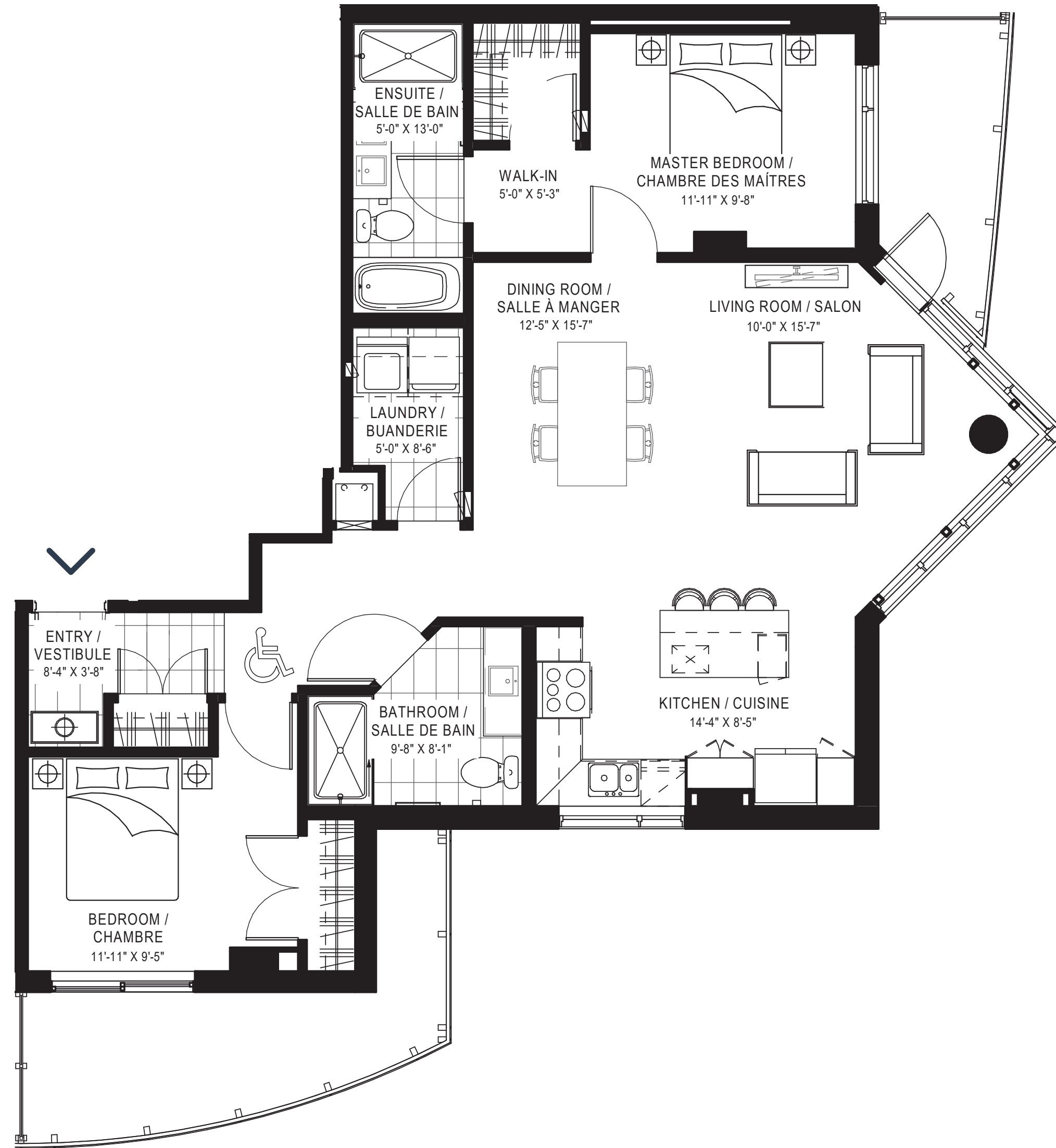
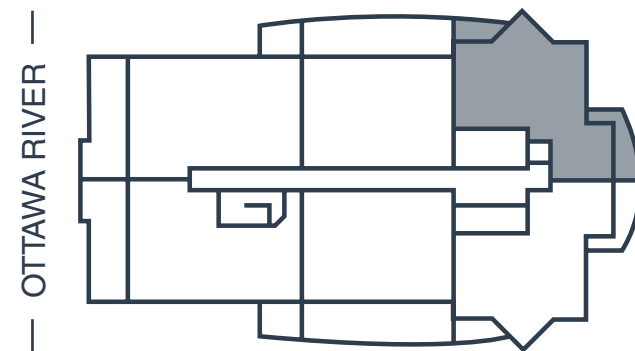
**2 Bedrooms**  
2 Chambres



**2 Bathrooms**  
2 Salles de bain

**UNIT | UNITÉ**

PH-1702



**Measurements are approximate. Les mesures sont approximatives.**  
These renderings are artist's concepts only. Specifications and floorplans subject to change without notice. | Ces illustrations sont des dessins d'artiste. Les spécifications et les plans de plancher peuvent changer sans préavis.

**Area | Superficie** 1,236 sq. ft. / pi<sup>2</sup> • **Balconies | Balcons** 203 sq. ft. / pi<sup>2</sup> • **Total** 1,442 sq. ft. / pi<sup>2</sup>

**PENTHOUSE - 17<sup>th</sup> FLOOR**  
**PENTHOUSE - 17<sup>e</sup> ÉTAGE**



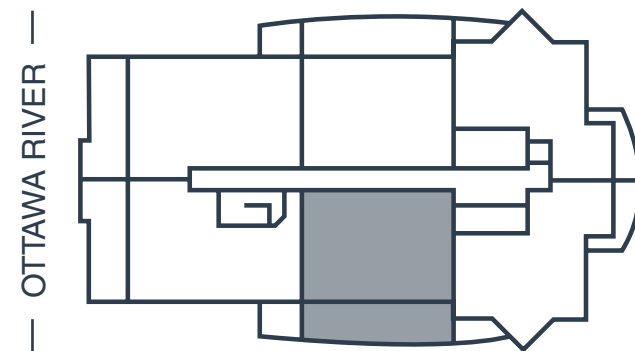
**2 Bedrooms**  
2 Chambres



**2 Bathrooms**  
2 Salles de bain

**UNIT | UNITÉ**

PH-1703



**Measurements are approximate. Les mesures sont approximatives.**  
These renderings are artist's concepts only. Specifications and floorplans subject to change without notice. | Ces illustrations sont des dessins d'artiste. Les spécifications et les plans de plancher peuvent changer sans préavis.

**Area | Superficie** 1,296 sq. ft. / pi<sup>2</sup> • **Balcony | Balcon** 446 sq. ft. / pi<sup>2</sup> • **Total** 1,742 sq. ft. / pi<sup>2</sup>



**PENTHOUSE - 17<sup>th</sup> FLOOR**  
**PENTHOUSE - 17<sup>e</sup> ÉTAGE**



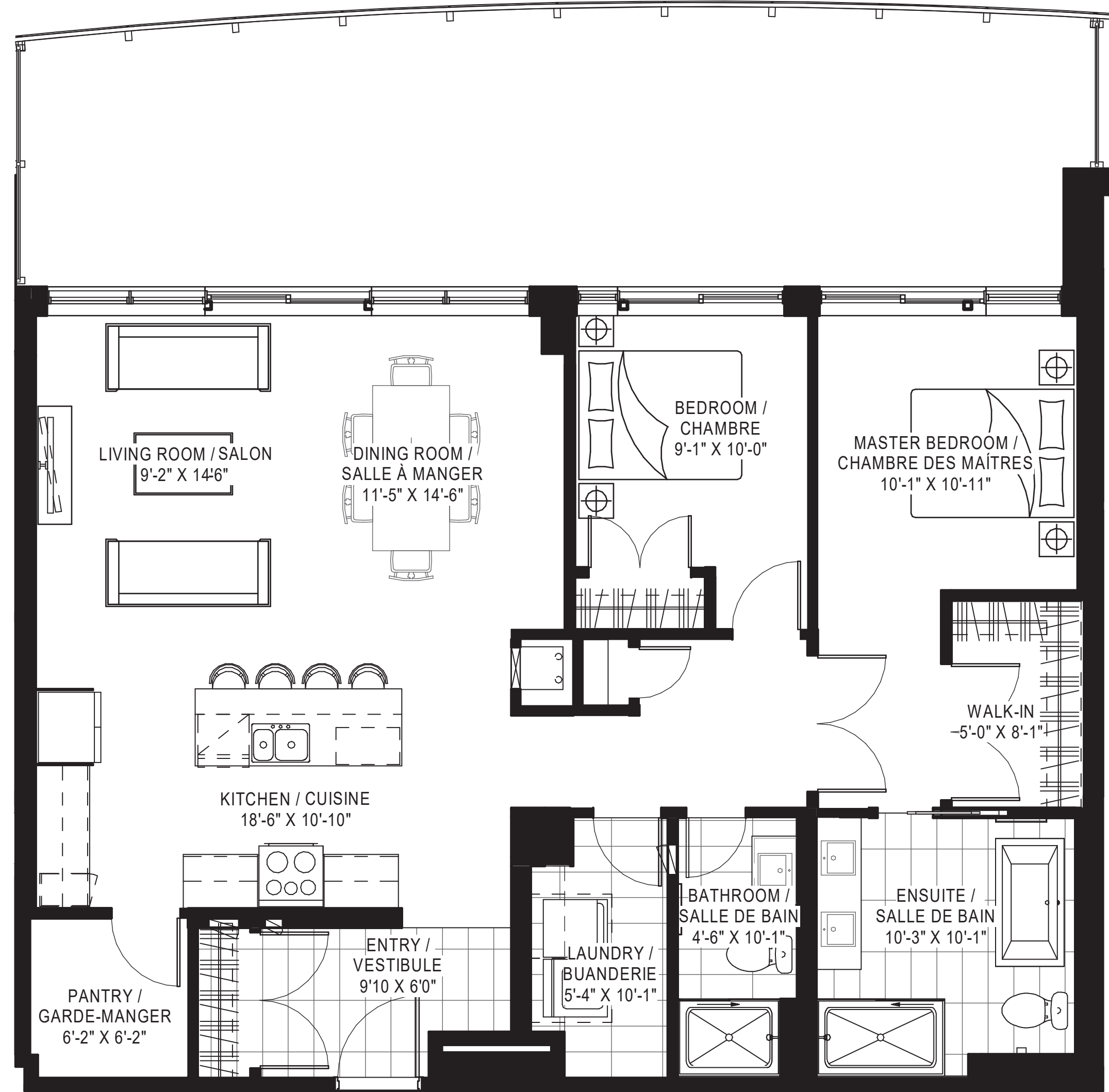
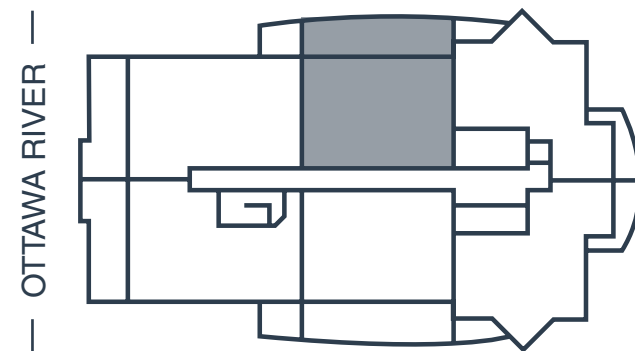
**2 Bedrooms**  
2 Chambres



**2 Bathrooms**  
2 Salles de bain

**UNIT | UNITÉ**

PH-1704



**Measurements are approximate. Les mesures sont approximatives.**  
These renderings are artist's concepts only. Specifications and floorplans subject to change without notice. | Ces illustrations sont des dessins d'artiste. Les spécifications et les plans de plancher peuvent changer sans préavis.

**Area | Superficie** 1,282 sq. ft. / pi<sup>2</sup> • **Balcony | Balcon** 451 sq. ft. / pi<sup>2</sup> • **Total** 1,733 sq. ft. / pi<sup>2</sup>

**PENTHOUSE - 17<sup>th</sup> FLOOR**  
**PENTHOUSE - 17<sup>e</sup> ÉTAGE**



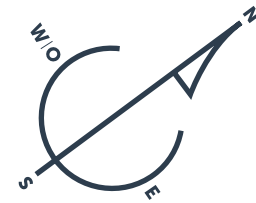
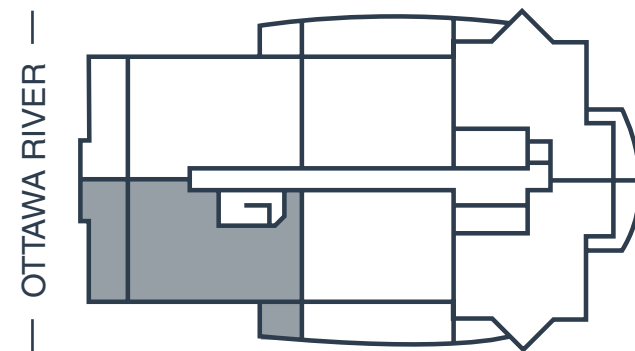
**2 Bedrooms**  
2 Chambres



**2 Bathrooms**  
2 Salles de bain

**UNIT | UNITÉ**

PH-1705



**Measurements are approximate. Les mesures sont approximatives.**  
These renderings are artist's concepts only. Specifications and floorplans subject to change without notice. | Ces illustrations sont des dessins d'artiste. Les spécifications et les plans de plancher peuvent changer sans préavis.

**Area | Superficie** 1,349 sq. ft. / pi<sup>2</sup> • **Balconies | Balcons** 478 sq. ft. / pi<sup>2</sup> • **Total** 1,827 sq. ft. / pi<sup>2</sup>

**PENTHOUSE - 17<sup>th</sup> FLOOR**  
**PENTHOUSE - 17<sup>e</sup> ÉTAGE**



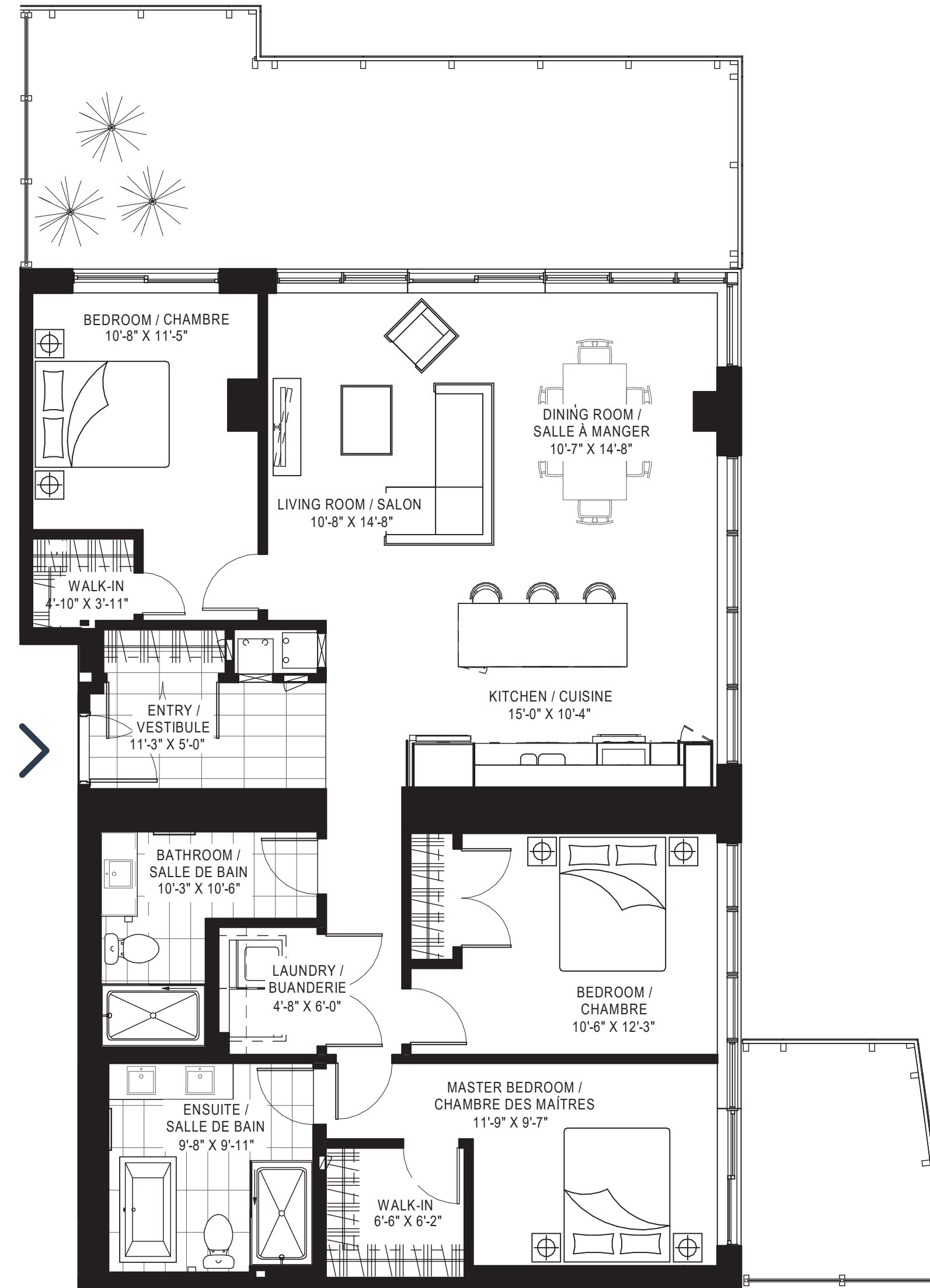
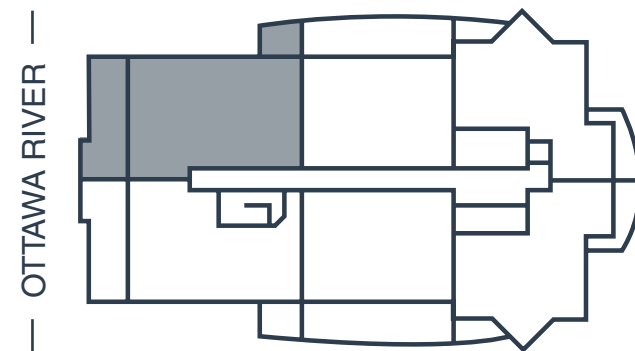
**3 Bedrooms**  
3 Chambres



**2 Bathrooms**  
2 Salles de bain

**UNIT | UNITÉ**

PH-1706



**Measurements are approximate. Les mesures sont approximatives.**  
 These renderings are artist's concepts only. Specifications and floorplans subject to change without notice. | Ces illustrations sont des dessins d'artiste. Les spécifications et les plans de plancher peuvent changer sans préavis.

**Area | Superficie** 1,529 sq. ft. / pi<sup>2</sup> • **Balconies | Balcons** 480 sq. ft. / pi<sup>2</sup> • **Total** 2,009 sq. ft. / pi<sup>2</sup>